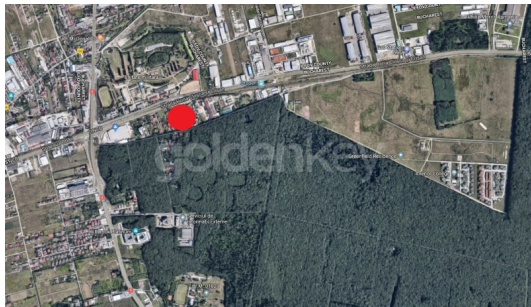


DN 1 - 15432sqm land plot near the forest and DN1
ID:493335

4,629,600 €



COMPLEX LOCUINTE

COMPLEX LOCUINTE



COMPLEX LOCUINTE

i GENERAL INFORMATION

- 3 cut
- 60 % POT

🏠 AREAS

- land: 15432 sqm

📏 CONTAINS

- opening: 177 m

🏠 Utilities

utilities in the area

📄 Property details

Located vsv of forest, with easy access to ring road and DN1, this plot of land has a total area of 15432sqm with a generous opening of 177m. There is a PUZ in progress for the following urbanistic coefficients: CUT: 3, POT 50%, Ug+Gf+4. It is ideal for a residential development in stages. The location is easily accessible and very close to the city.

➔ <https://www.goldenkey.ro/en/property-15432sqm-land-plot-near-the-forest-and-dn1-cp493335>