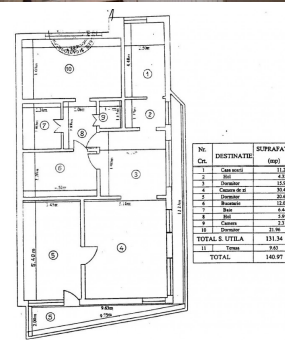


PRIMAVERII - 2 bedrooms apartment
150sqm

600,000 €



GENERAL INFORMATION

- 3 rooms
- level: 4 / 1S+P+4E
- construction year: 2000

AREAS

- built: 150 sqm
- usable: 131 sqm

CONTAINS

- 2 bedrooms
- 1 bathrooms

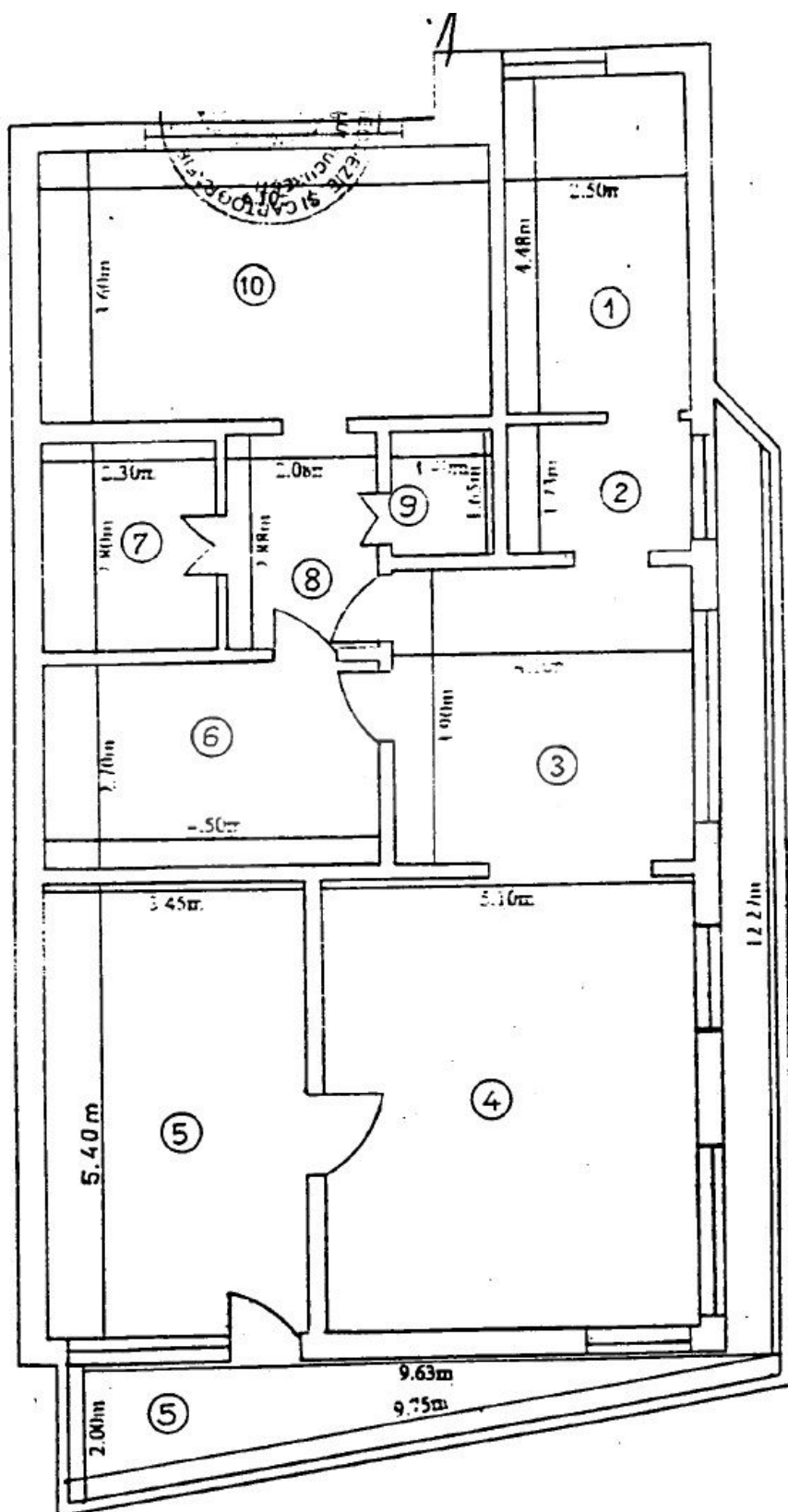
Utilities

air conditioning, washing machine, tv, unfurnished, radiators, central heating, furnished kitchen, equipped kitchen, water meters, heating meter, electricity meter

Property details

Located on a side quiet street in Primaverii area, near both Charles de Gaulle Sq. and Herastrau Park, this 2 bedrooms apartment is at the top floor of an Ug+GF+4 building finalized in 2000. It has 141sqm built, 120sqm usable including 10sqm terrace. It is composed of 47sqm living room, terrace, semi-open equipped kitchen, 2 bedrooms, bathroom and dressing. Considering the location and the generous space, it is suitable for a young family.

➔ <https://www.goldenkey.ro/en/property-2-bedrooms-apartment-150sqm-aviatorilor-metro-cp9735>



Nr. Crt.	DESTINATIE	SUPRAFATA (mp)
1	Casa scarii	11.20
2	Hol	4.32
3	Dormitor	15.99
4	Camera de zi	30.47
5	Dormitor	20.61
6	Bucatarie	12.05
7	Baie	6.44
8	Hol	5.99
9	Camera	2.31
10	Dormitor	21.96
TOTAL S. UTILA		131.34
11	Terasa	9.63
TOTAL		140.97