

BANEASA - 2 bedrooms apartment near metro station
ID:2833588

286,000 €



GENERAL INFORMATION

- 3 rooms
- level: 5 / 1S+P+6E
- construction year: 2025

AREAS

- built: 121.22 sqm
- usable: 101.21 sqm

CONTAINS

- 2 bedrooms
- 3 bathrooms

Utilities

air conditioning, bathtub, unfurnished, central heating, underfloor heating, closed kitchen, water meters, electricity meter, gas meter, shared yard, elevator, service closet

Property details

Placed in Baneasa area, 8 minutes from Straulesti metro station, this 2 bedrooms apartment is part of a residential project built on the shores of Straulesti Lake and is located on the 5th floor of a building Ug+Gf+6. It has a total area of 121.22sqm and 101.21sqm usable. It consists of a spacious living room with access to the terrace, separate kitchen, bathroom and 2 bedrooms with private bathrooms. The apartment benefits from good quality finishes and is the suitable option for a family's residence.

<https://www.goldenkey.ro/en/property-2-bedrooms-apartment-near-metro-station-cp2833588>

Floorplan

Nr. camere: 3 tip: A.5.2

Nr. băi: 3

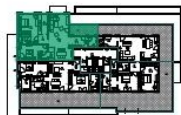
Etaj: 5

Suprafață
construită
totală: 121.22 m²

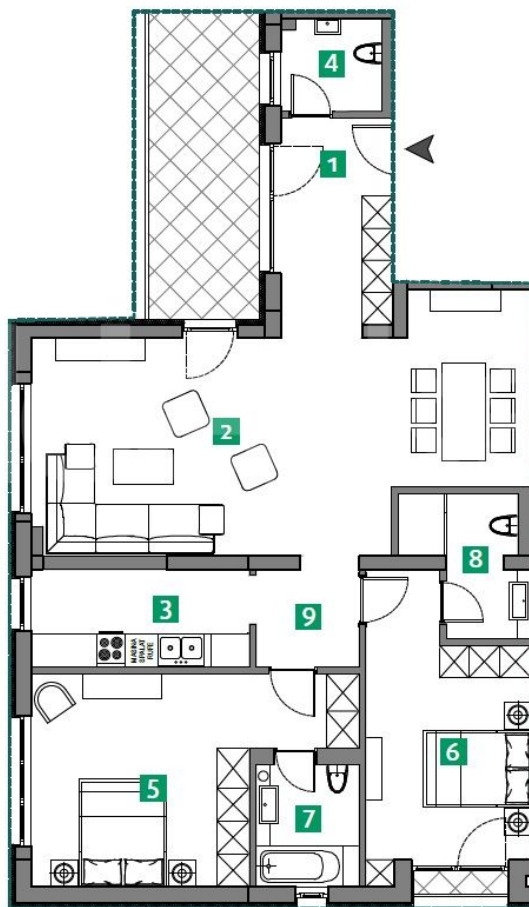
Orientare în
clădire:



SV



Acest material de prezentare are caracter informativ și poate suferi modificări nesubstanțiale.



Suprafețe utile

1.	HOL:	8.34 m ²
2.	CAMERĂ DE ZI:	36.49 m ²
3.	BUCĂTĂRIE:	7.24 m ²
4.	GRUP SANITAR:	3.16 m ²
5.	DORMITOR 1:	18.81 m ²
6.	DORMITOR 2:	14.40 m ²
7.	BAIE 1:	4.42 m ²
8.	BAIE 2:	4.79 m ²
9.	SAS:	3.56 m ²

Suprafața
utilă totală: 101.21 m²

TERASĂ: 12.02 m²
LOGIE: 0.8 m²