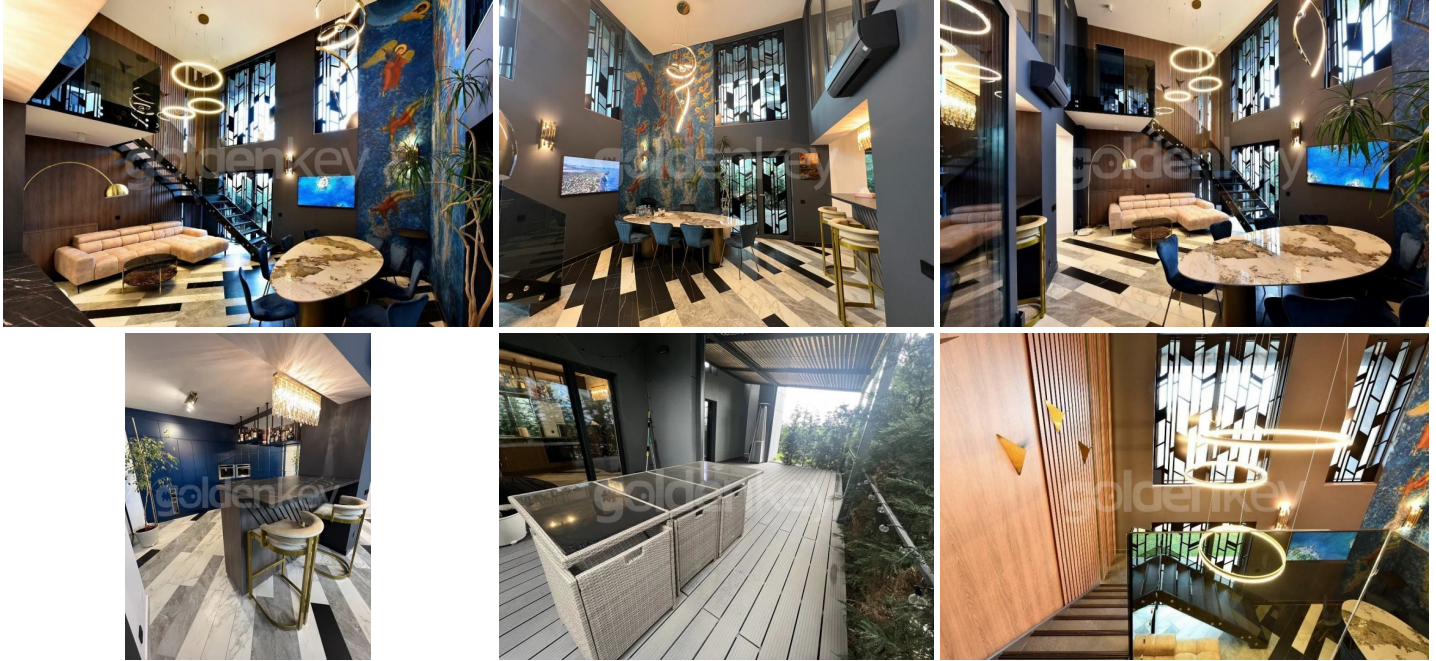


AVIATIEI - 2 bedrooms duplex apartment with 91sqm garden
modernly furnished

3,500 € / lună
580,000 €



GENERAL INFORMATION

- 3 rooms
- level: Parter+1 / 1S+P+11E
- construction year: 2020

AREAS

- built: 155 sqm
- usable: 97 sqm

CONTAINS

- 2 bedrooms
- 2 bathrooms

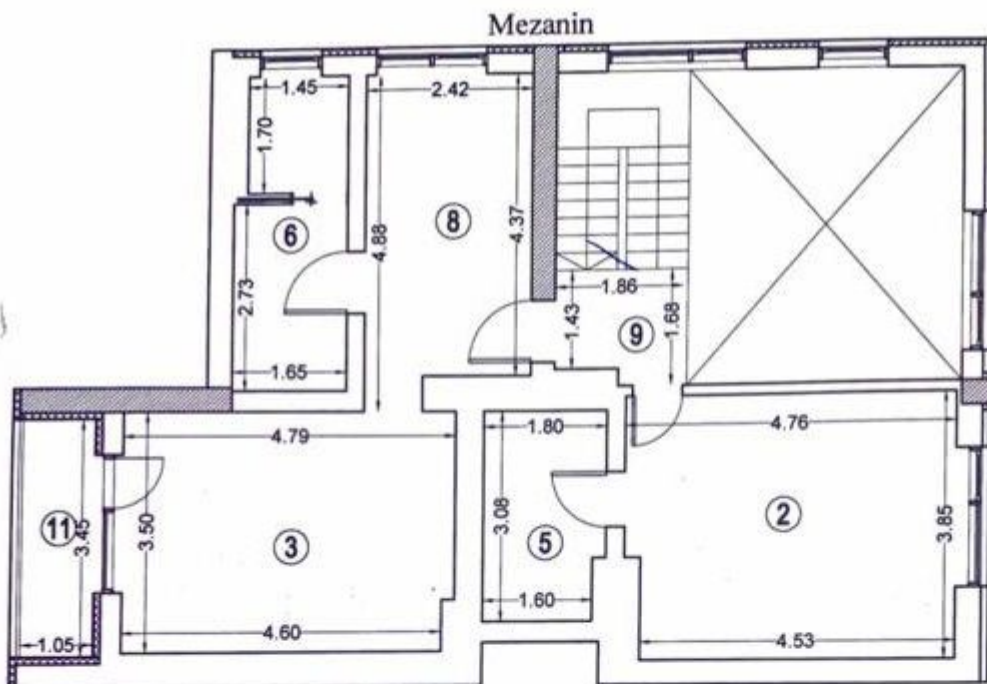
Utilities

air conditioning, stove, shower, bathtub, fridge, kitchen hood, dishwasher, staircase, tv, fully furnished, central heating, underfloor heating, open kitchen, furnished kitchen, equipped kitchen, water meters, electricity meter, private garden, storage room, sauna, service closet

Property details

Located in Aviatiei area, a short distance from Aurel Vlaicu metro station and Pipera - Barbu Vacarescu business area, this 2 bedrooms duplex apartment is disposed on 2 levels (GF + mezzanine) of an Ug+Gf+11 building. The built area is 155sqm of which 97sqm usable and 20sqm terraces. It also has 91sqm garden. The ground floor consists of living room with access to the garden, open and fully equipped kitchen and guest toilet. On the mezzanine floor is the master bedroom with en-suite bathroom, sauna and dressing area and secondary bedroom with en-suite bathroom. The price includes 1 outdoor parking space and separately can be rent / purchase 2 more (100Euro + VAT / place or 25,000 Euro + VAT / place). It is fully finished and furnished with high quality materials such as marble, wood, stone and Filomuro doors. It can be rented both for office and for residence for 3500Euro+VAT/month.

<https://www.goldenkey.ro/en/property-2-bedrooms-duplex-apartment-with-91sqm-garden-modernly--urnished-cp1855314>



| Nr. Incapere | Denumire incapere | Suprafata utila (mp) |
|-----------------------------|-------------------|----------------------|
| 1 | Camera | 25.4 |
| 2 | Camera | 18.0 |
| 3 | Camera | 18.6 |
| 4 | Bucatarie | 4.1 |
| 5 | Baie | 5.4 |
| 6 | Baie | 7.1 |
| 7 | Baie | 3.1 |
| 8 | Hol | 11.0 |
| 9 | Hol | 2.9 |
| 10 | Hol | 3.1 |
| Suprafata utila (mp) = | | 96.7 |
| 11 | Terasa | 3.6 |
| 12 | Terasa | 4.1 |
| 13 | Terasa | 12.6 |
| Suprafata totala (mp) = | | 117.0 |
| Suprafata construita (mp) = | | 155.4 |

