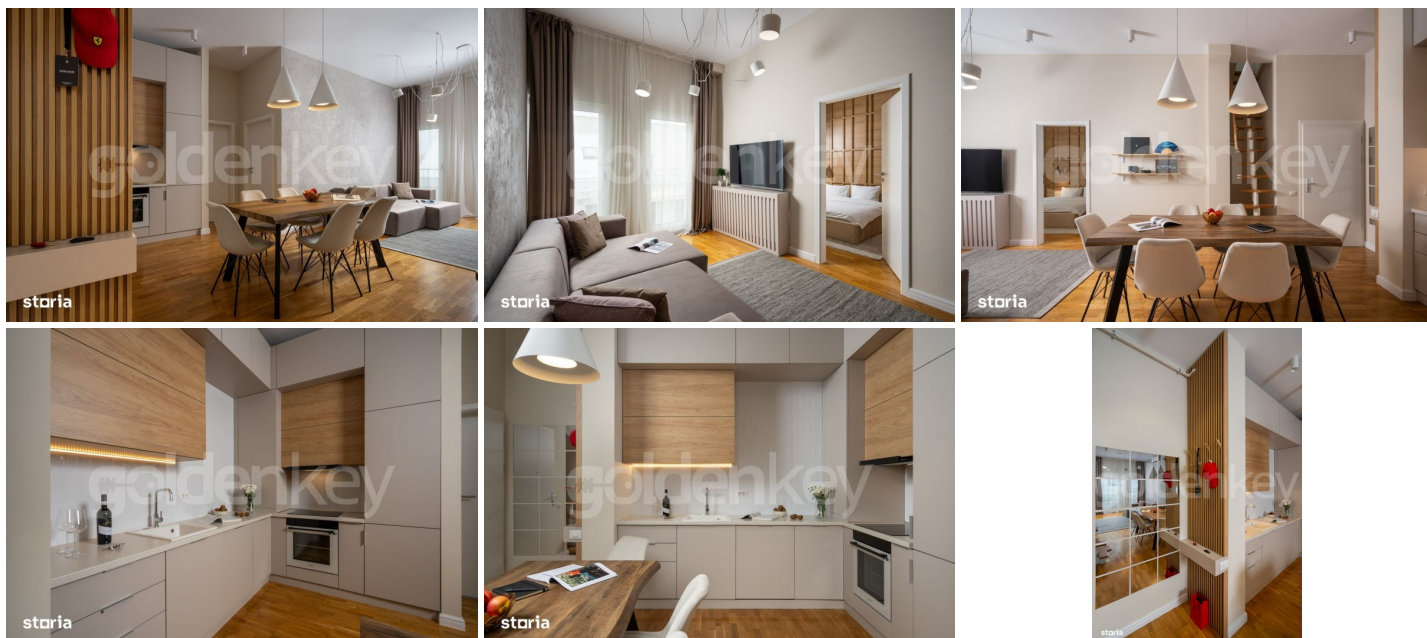


EMINESCU - 2bedrooms penthouse apartment
170sqm terrace

1,400 € / lună



GENERAL INFORMATION

- 3 rooms
- level: 4 / P
- construction year: 2021

AREAS

- built: 240 sqm
- usable: 75 sqm

CONTAINS

- 2 bedrooms
- 2 bathrooms

Utilities

air conditioning, stove, shower, bathtub, fridge, kitchen hood, washing machine, dishwasher, partially furnished, radiators, central heating, open kitchen, furnished kitchen, equipped kitchen, water meters, electricity meter, gas meter, elevator, service closet

Property details

This 2bedrooms penthouse apartment is located in the Eminescu area, with a panoramic view and is located on the 4th floor of a S+GF+4 building completed in 2021. It has a total area of 240sqm, 75sqm usable and 170sqm terrace. The apartment is composed of a living room with dining area, fully furnished and equipped open kitchen, master bedroom with en-suite bathroom, secondary bedroom and secondary bathroom. The apartment is partially furnished and includes 1 parking space. Given the central location, this apartment is recommended for residence.

<https://www.goldenkey.ro/en/property-2bedrooms-penthouse-apartment-170sqm-terrace-cp3108665>