

HERASTRAU - 8 rooms villa near park
450sqm

4,900 € / lună



GENERAL INFORMATION

- 8 rooms
- level: 1S+P+1E+M
- construction year: 2003

AREAS

- built: 450 sqm
- usable: 400 sqm

CONTAINS

- 5 bedrooms
- 3 bathrooms

Utilities

stove, staircase, tv, luxury furnished, partially furnished, unfurnished, radiators, central heating, furnished kitchen, partially equipped kitchen, water meters, heating meter, electricity meter, gas meter, yard, private garden, service closet, barbeque area

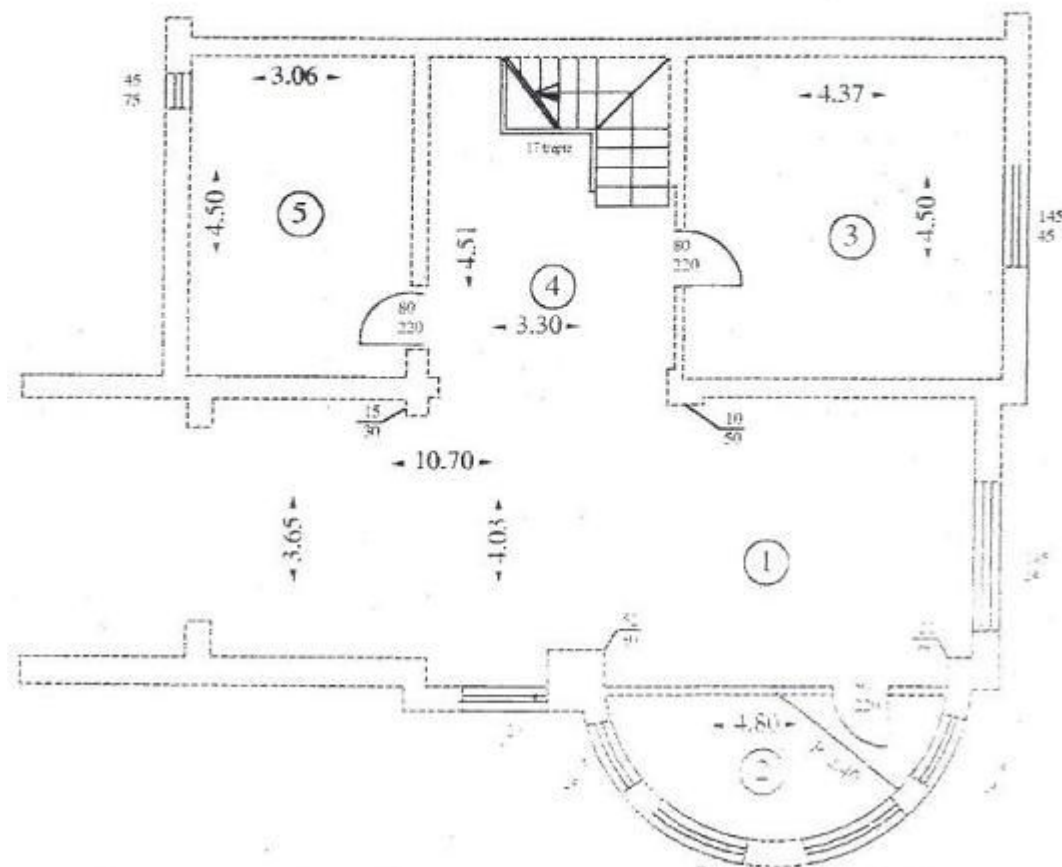
Property details

Located in Herastrau area, on a side street, the Ug+Gf+2 villa has 450sqm built (400sqm usable) on a land plot of 400sqm (285sqm garden). It can be rearranged in a 4-6 bedrooms villa. The basement is composed of technical area and 2 garages. At the Gf there is a large living room, kitchen fully fitted and toilet. The 1st floor has 3 bedrooms and 2 bathrooms. The 2nd floor has a large open -space (can be rearranged in 2-3 bedrooms), a bathroom and a relax room. The quiet and secure area, the proximity of the park, many restaurants, markets, shops, schools are some of the advantages of this gorgeous property. It is suitable for a large family residence and also for office.

<https://www.goldenkey.ro/en/property-8-rooms-villa-near-park-450sqm-400sqm-land-cp7055>

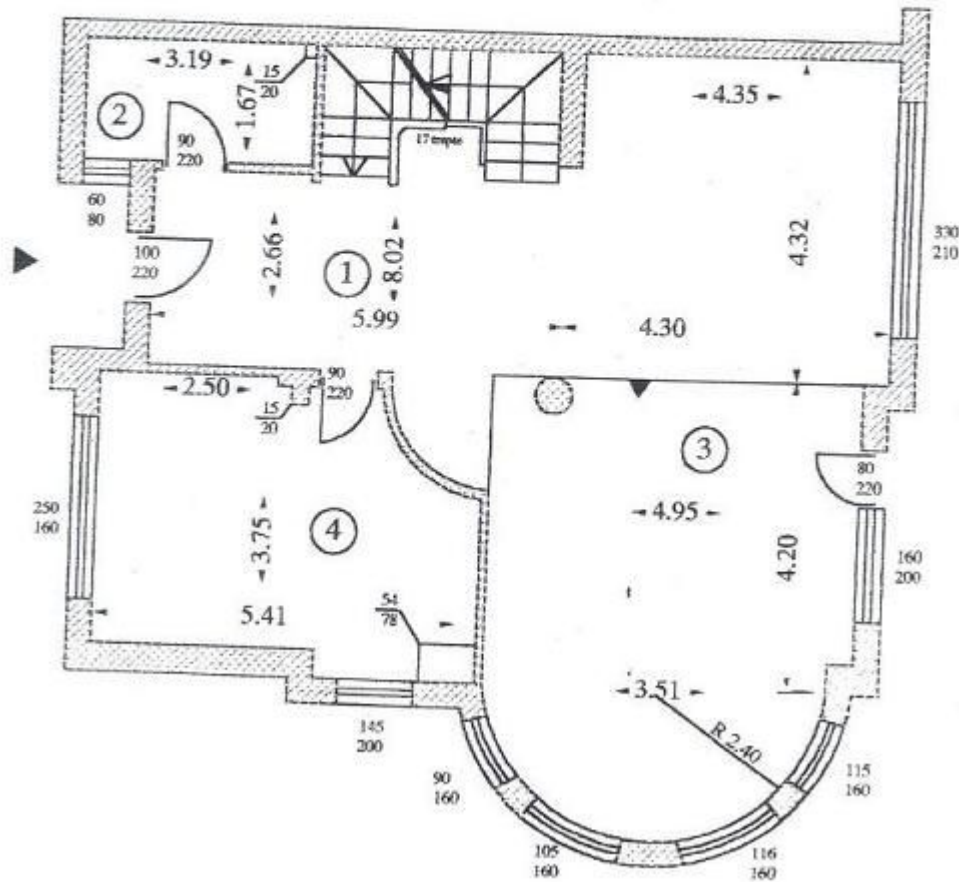
Corp 1
DEMISOL

NR.	DESTINAȚIA-	SUPRAFAȚA mp
1	Garaaj	41.16
2	Centrala termica	6.91
3	Crană	19.66
4	Hol	14.88
5	Spalatorie	13.77
TOTAL SUPRAFAȚA UTILĂ		9638



Corp 1
PARTER

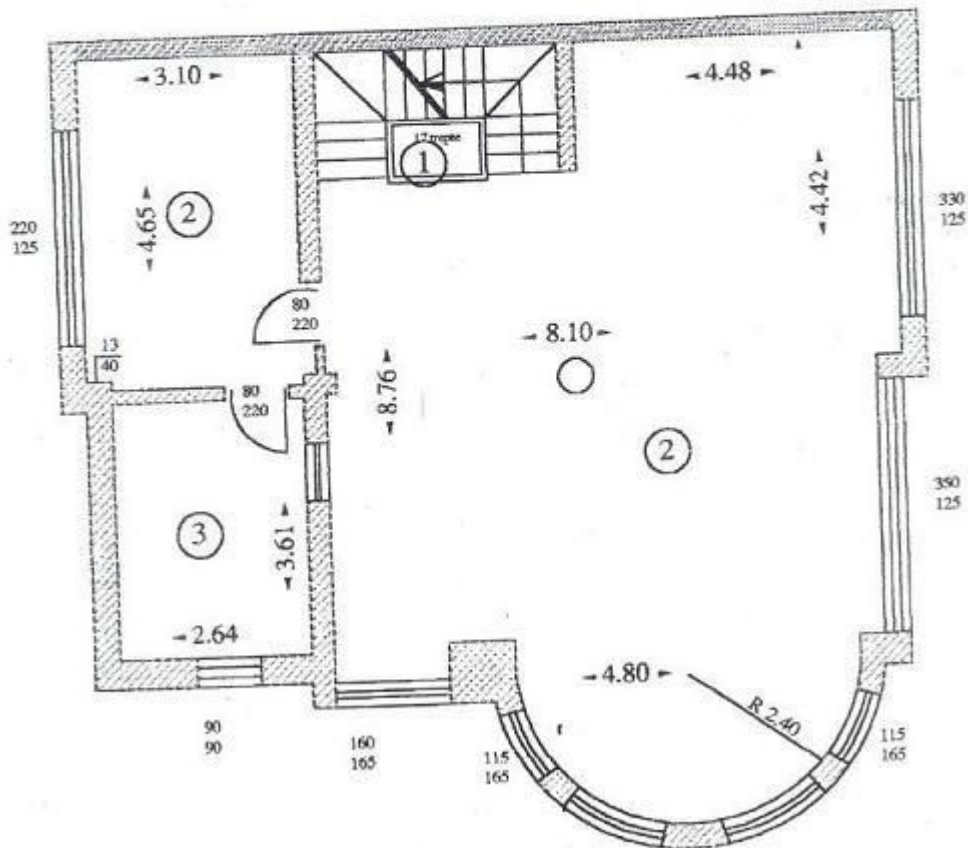
NR.	DESTINAȚIA	SUPRAFAȚA mp
1	Hol	21.37
2	Baie	5.30
3	Camera de zi	51.68
4	Bucătărie	18.95
TOTAL SUPRAFAȚĂ UTILĂ		97.30



Corp 1

ETAJ 1

NR.	DESTINAȚIA	SUPRAFAȚA mp
1	Hol	6.90
2	Camera de zi	69.56
3	Baie	9.53
4	Dormitor	14.42
TOTAL SUPRAFAȚĂ UTILĂ		100.41



RECAPITULAȚIE

Corp 1

ETAJ 2

NR.	DESTINAȚIA	SUPRAFAȚA mp
1	Hol	6.90
2	Camera de zi	69.56
3	Baie	9.53
4	Dormitor	14.42
TOTAL SUPRAFAȚĂ UTILĂ		100.41

