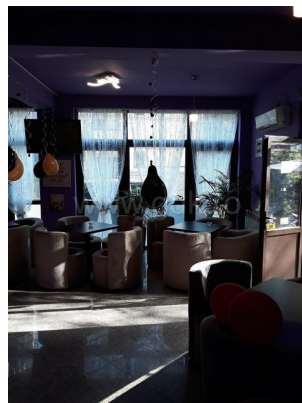
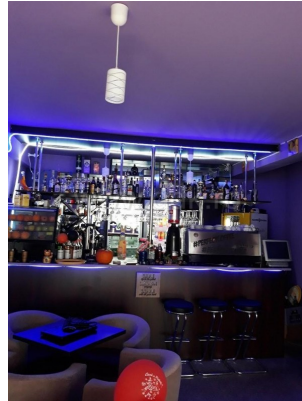


BANU MANTA - 90sqm Commercial Space/Coffee shop  
ID:279631

**6,500 RON / lună**  
**649,000 €**



### **GENERAL INFORMATION**

- 2 rooms
- level: floor Demisol+Parter / D+P+2E+M
- construction year: 2015

### **AREAS**

- built: 110 sqm
- usable: 90 sqm

### **CONTAINS**

- bedrooms
- 1 bathrooms

### **Utilities**

trafic intens, casă / vilă, vitrina 6 m, 1 terase, electricity, gas, sewage, water

### **Property details**

Located on a main street, in Banu Manta area, near Piata Victoriei, this commercial space takes place on two levels (ground floor and basement) and is located in a Bs + Gf + 2 + At building, completed in 2015. It has a built area of 110sqm out of which 90sqm sable area and 40sqm terrace. The building is located on the corner has double street view, 4 door access, 3 with street access and one at the rear side, the rooms have a height of 3 meters and a 6 meters linear window is facing the street. The space is modernly furnished and equipped for a coffee shop, but it is also recommended for tea shop, pastry shop, snack bar, kids' events location, etc.

➔ <https://www.goldenkey.ro/en/property-90sqm-commercial-space-coffee-shop-cp279631>