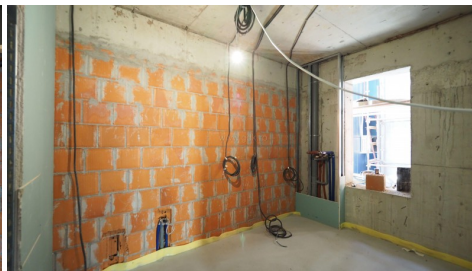


AVIATIEI - Boston Residence - New 3 bedrooms apartment,
121sqm
ID:635383

174,839 €



GENERAL INFORMATION

- 4 rooms
- level: 1 / 1S+P+5E
- construction year: 2019

AREAS

- built: 121 sqm
- usable: 96 sqm

CONTAINS

- 3 bedrooms
- 2 bathrooms

Utilities

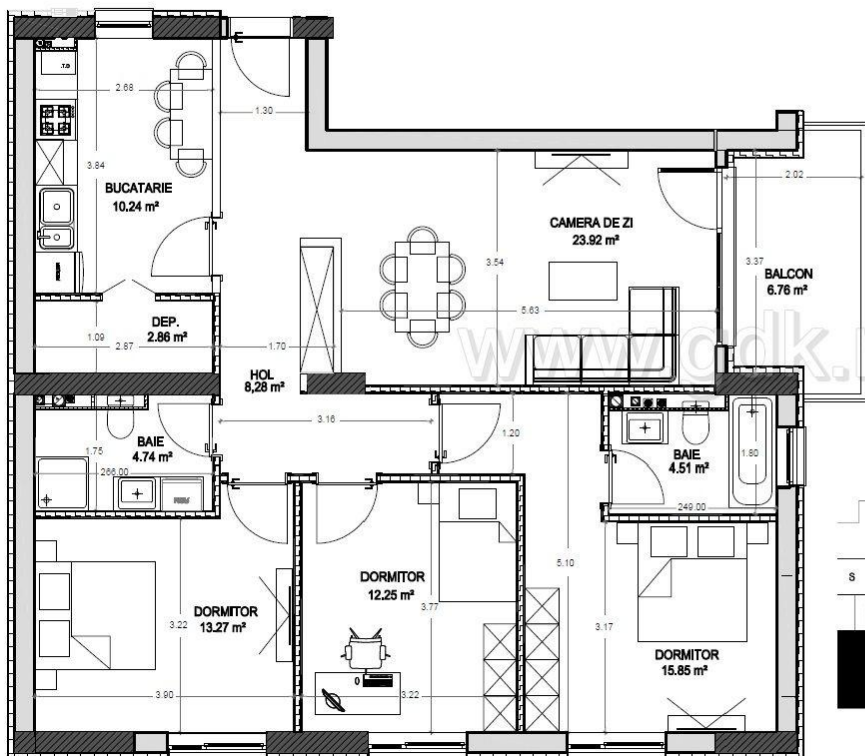
central heating, radiators, electricity meter, gas meter, heating meter, water meters, elevator, service closet

Property details

Ideally located in the area of Aviatiei, behind Crystal Palace Hotel, only 800m from Aurel Vlaicu Metro Station and only 1300m Promenada Mall and Herastrau Park, this project has 16 residential units spread on 6 levels, Ug+Gf+5. There are only 3 apartments/floor with 1, 2 and 3 bedrooms. Technical specifications: The structure is made of reinforced concrete with 30cm brick filling, thermic and sound proof slab, final height of the rooms is 3 metres, optimal space distribution with large glazed surfaces. Thermal insulation is ensured by Rockwool mineral wool and Caparol, Windows are with Veka profiles, elevator is Kleemann Atlas. Each unit has Viessmann individual heating and individually metered utilities (water, electricity and gas). The finishes are modern and of good quality: triple layered parquet, recessed wall radiators under windows, Porcelanosa ceramics, Roca sanitary, Pinum doors, Bticino electricals, built in safe box and Novatek infrastructure for charging electric cars. Advantages: Best location close to Metro and the most developed office area of the city, walking distance to all points of interest represents the main asset of this project. Smart brick walls, high ceiling rooms, reduced number of units, installations and modern finishes are also just some of the reasons to choose Boston Residence.

➔ <https://www.goldenkey.ro/en/property-boston-residence-new-3-bedrooms-apartment-121sqm-cp635383>

Type 4 Room



Living	23,92 sqm
Bedroom 1	15,85 sqm
Bedroom 2	13,27 sqm
Bedroom 3	12,25 sqm
Kitchen	10,24 sqm
Hall + Storage	8,28 sqm
Deposit Room	2,86 sqm
Bathroom	4,51 sqm
Bathroom	4,74 sqm
Useful Area Ap.	95,92 sqm
Constructed Area Ap.	113,20 sqm
Loggia/Balcony	6,76 sqm
Total Useful Area	102,68 sqm
Total Constructed Area	120,97 sqm

