

PRIMAVERII - Building Bs+Gf+3  
870sqm

**3,900,000 €**



### **GENERAL INFORMATION**

- 15 rooms
- level: floor
- Demisol+Parter+1+2+3 /  
D+P+2E+3R
- construction year: 2000

### **AREAS**

- built: 870 sqm
- usable: 750 sqm

### **CONTAINS**

- bedrooms
- 8 bathrooms

### **Utilities**

logo on building, ventilation system

### **Property details**

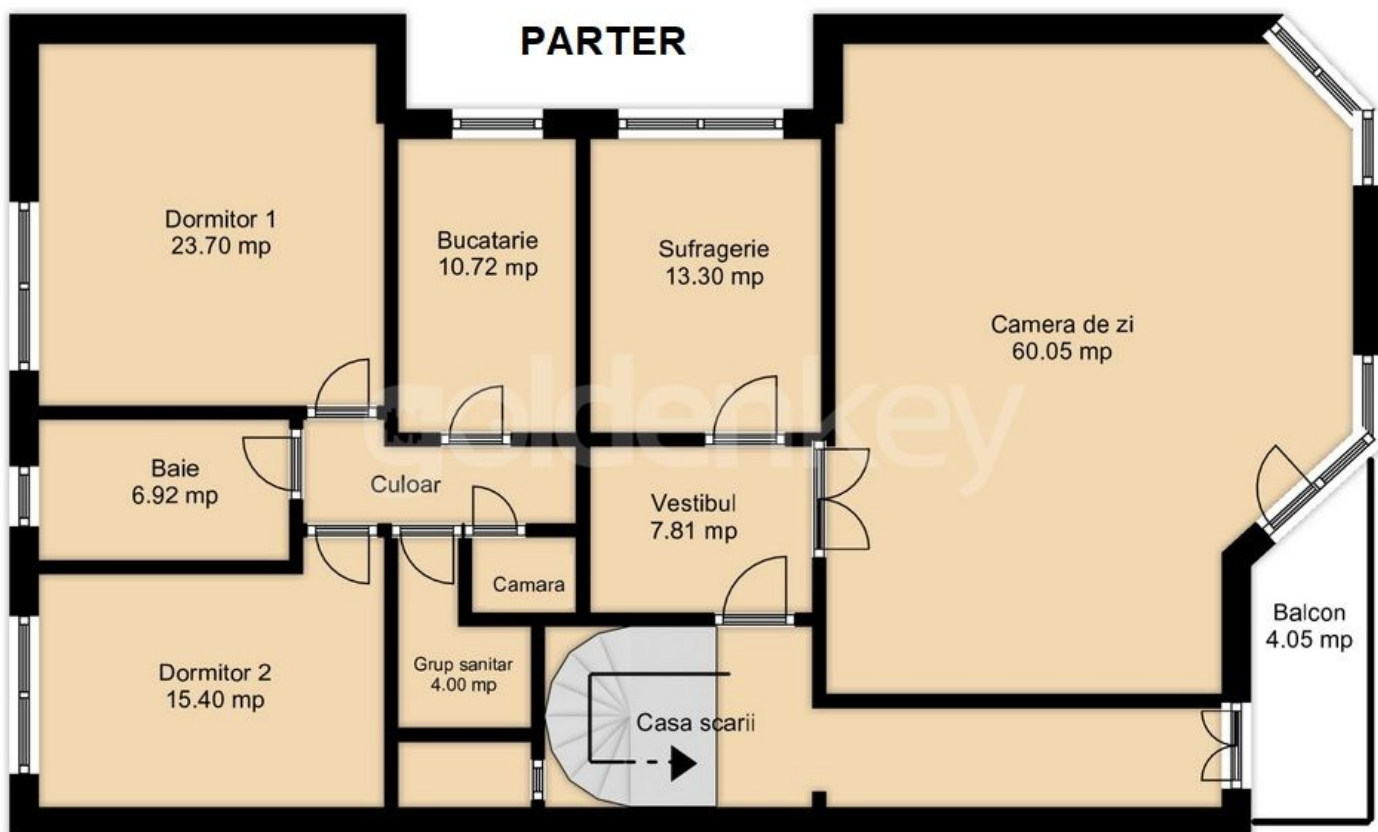
Located in the premium area of Primaverii, on a quiet street, this SBs+Gf+3 is a few minutes walking distance to both Herastrau and Bordei Parks, near Charles de Gaulle Sq. It has a total built area of 870sqm, 750sqm usable, on a land plot of 426 sqm. Now the building is composed of 5 apartments, one per floor (3 apart. of 3 bedrooms and 2 apart. of 1 bedroom). The semi-basement is composed of a one bedroom apartment, 2 garages and technical room. The ground floor, 1st and 2nd floors have one apartment of 3 bedrooms with 2 bathrooms. The 3rd floor has 12 bedrooms apartment and generous terrace. Considering the excellent position, the facilities and the quiet area close to the bus and metro stations, restaurants, private clinics, schools, kindergartens, this building is perfect for investment.

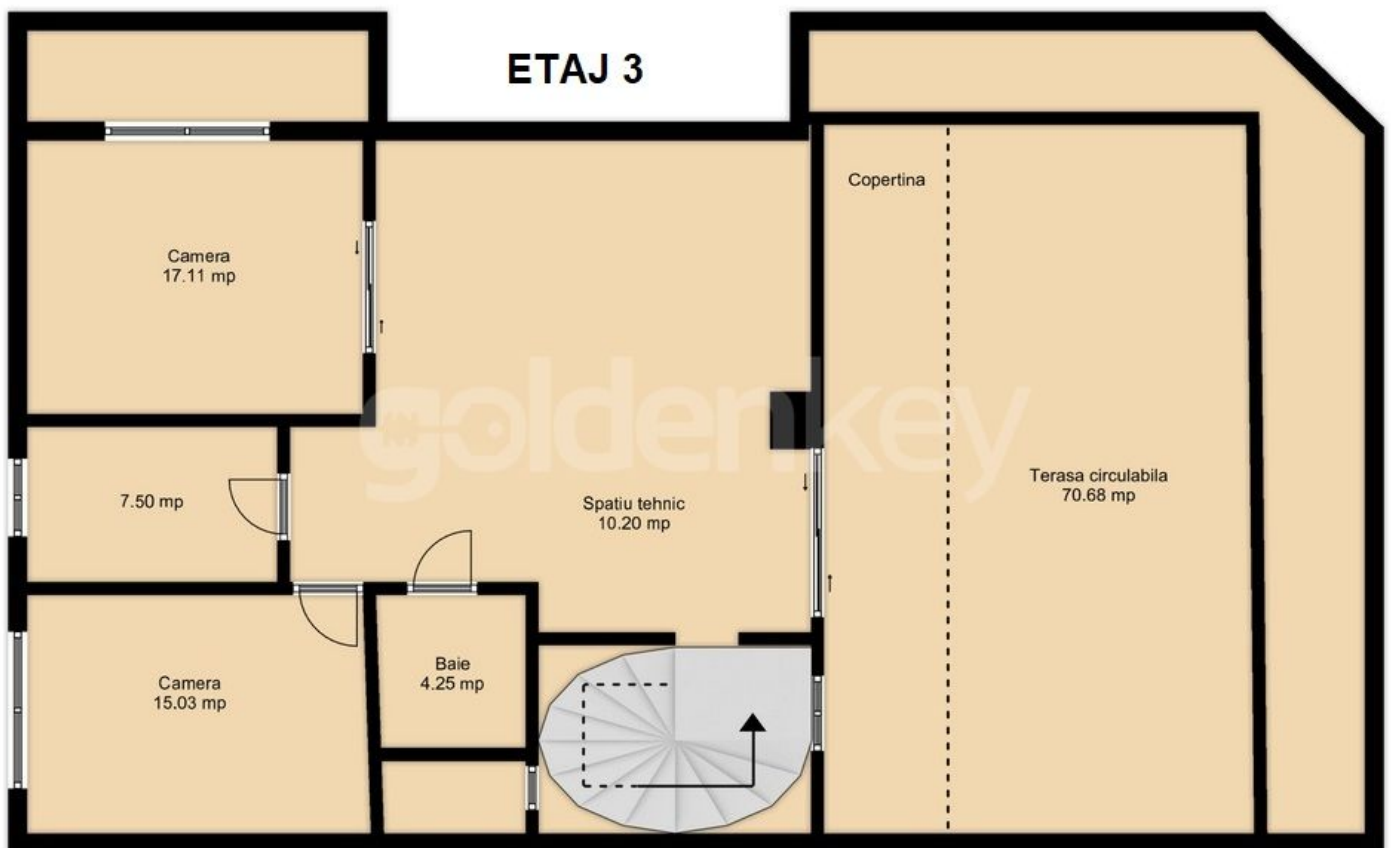
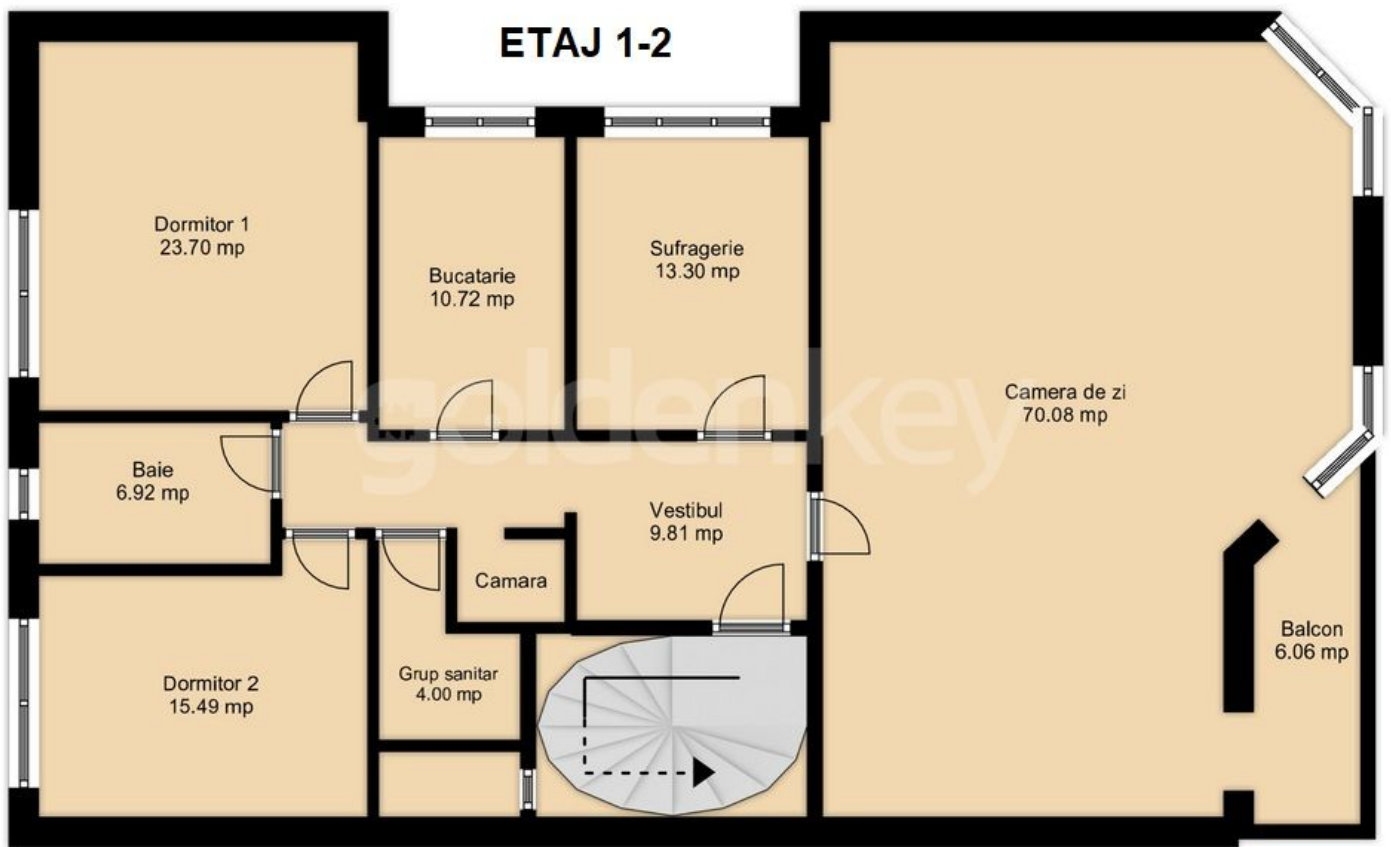
<https://www.goldenkey.ro/en/property-building-bs-gf-3-870sqm-ideal-offices-commercial-clinique-cp2112816>

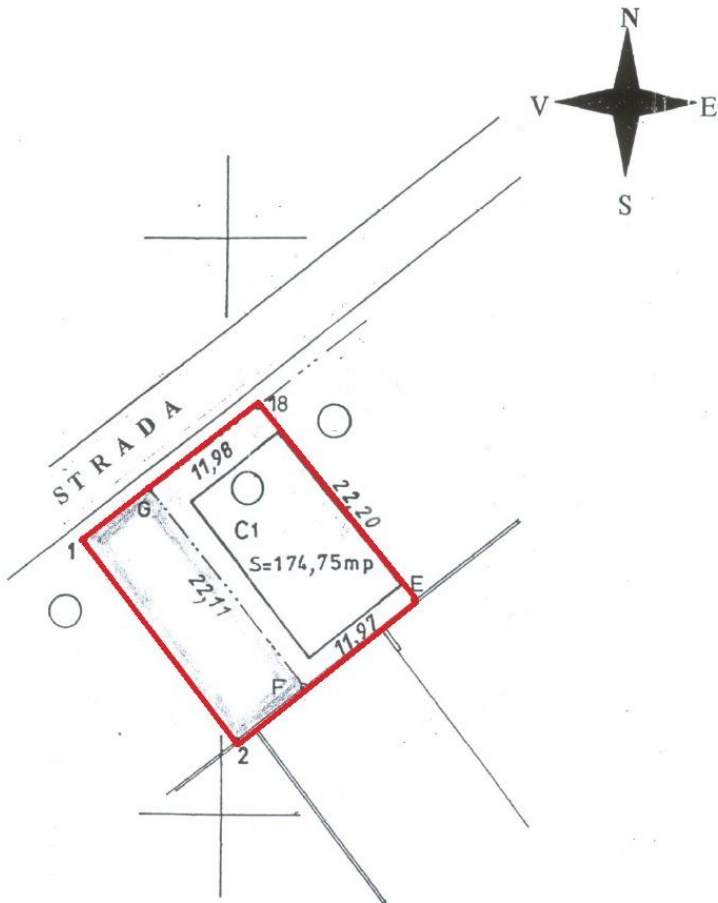
### DEMISOL



### PARTER







### COORDONATE CONTUR IMOBIL

Calculul analitic al suprafetei  
Plan Local Bucuresti

NR. CRT	X[m]		Y[m]	
	18	555 702	71	341 585
E	555 716	78	341 568	65
F	555 707	38	341 561	40
G	555 693	33	341 578	47
<b>S=264.68 m.p.</b>				

### COORDONATE CONTUR TEREN FOLOSIT

Calculul analitic al suprafetei  
Plan Local Bucuresti

NR. CRT	X[m]		Y[m]	
	1	555 687	89	341 574
G	555 693	33	341 578	47
F	555 707	38	341 561	40
2	555 701	33	341 556	69
<b>S=161.57m.p.</b>				