

HERASTRAU - Classic eclectic 4-5 bedrooms penthouse
beautiful view over park and lake

6,500 € / lună



GENERAL INFORMATION

- 7 rooms
- level: 6 / 1S+P+6E
- construction year: 2005

AREAS

- built: 723 sqm
- usable: 345 sqm

CONTAINS

- 4 bedrooms
- 5 bathrooms

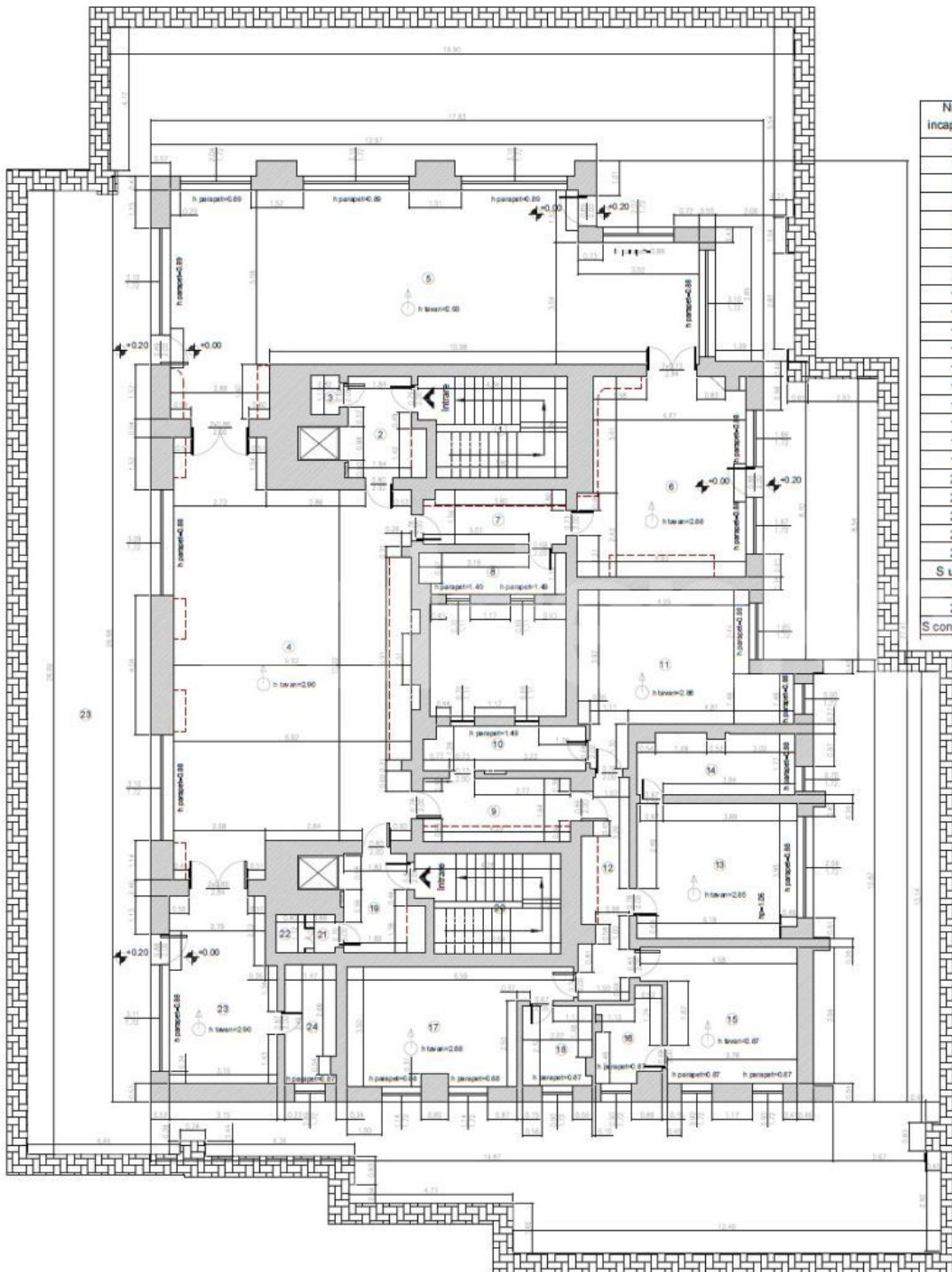
Utilities

air conditioning, stove, bidet, shower, bathtub, dressing room, fridge, kitchen hood, washing machine, dishwasher, tv, fully furnished, central heating, fan coil units, closed kitchen, furnished kitchen, equipped kitchen, electricity meter, elevator

Property details

Located in Herastrau area, with beautiful view over the Park and Lake, this 4-5 bedrooms penthouse apartment is on the 6th floor of a building Ug+Gf+6 completed in 2005 combining the classic with eclectic style. It has a total area of 723sqm, 345sqm usable and 355sqm terrace. It is composed of a spacious living room (77sqm) with good natural light, dining room (77sqm), fully equipped separate kitchen, office with en-suite bathroom, 4 bedrooms with en suite bathrooms and dressing areas. It has access to 2 elevators and benefits of storage and laundry area. Includes 2 parking spaces in the underground garage. The apartment is furnished and is suitable for residence.

➔ <https://www.goldenkey.ro/en/property-classic-eclectic-4-5-bedrooms-penthouse-beautiful-vier-ov-r-park-and-lake-cp2497432>



Nr. incapere	Denumire incapere	Suprafata utila (mp)
2	Hol	6.09
3	Debara	0.96
4	Sufragerie	77.82
5	Sala de mese	77.05
6	Bucatarie	26.87
7	Hol	6.53
8	Debara	4.98
9	Hol	7.89
10	Baie	5.92
11	Dormitor 1	22.90
12	Hol	8.47
13	Dormitor 2	18.21
14	Baie	7.93
15	Dormitor 3	15.66
16	Baie	4.58
17	Dormitor 4	18.67
18	Baie	4.59
19	Hol	6.18
21	Magazie	0.99
22	Magazie	0.90
23	Living	16.47
24	Baie	4.99
25	Mansarda	355.11
S utila		699.76
1	Casa scarii	11.98
20	Casa scarii	11.47
S construita		723.21