

HERASTRAU - Duplex penthouse with 6 rooms, 4 baths
312mpc

799,000 €



GENERAL INFORMATION

- 6 rooms
- level: 5+6 / 1S+P+6E
- construction year: 2007

AREAS

- built: 312 sqm
- usable: 223 sqm

CONTAINS

- 5 bedrooms
- 4 bathrooms

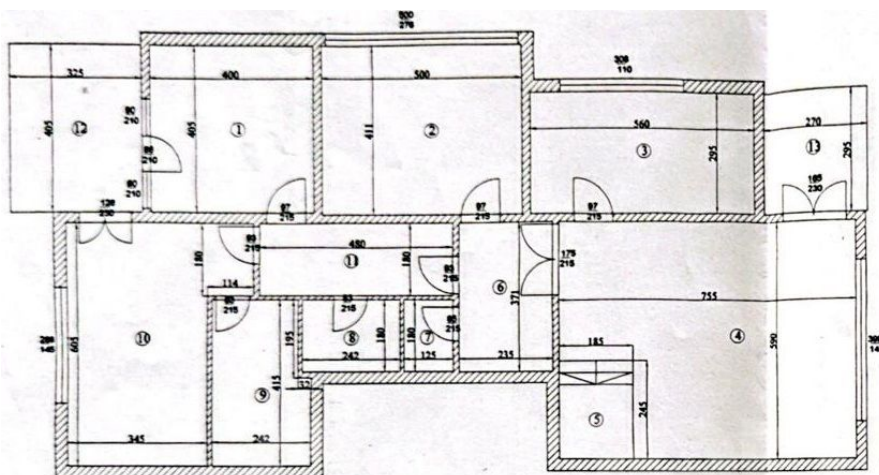
Utilities

air conditioning, stove, bidet, shower, bathtub, dressing room, fridge, kitchen hood, washing machine, dishwasher, tv, fully furnished, radiators, central heating, furnished kitchen, equipped kitchen, water meters, heating meter, electricity meter, gas meter, shared yard, elevator, service closet, barbeque area

Property details

A few steps from Herastrau Park, this super-spacious 6-room penthouse apartment is located on the last 2 floors (5th+6th) of a residential building Ug+Gf+6 completed in 2007. The view is panoramic over the area. It has a total area of 312sqm of which 223sqm usable and 2 terraces of 96sqm. On the 5th floor we have: * Spacious living room - 40 sqm * Closed kitchen - 17 sqm * Master bedroom - 23 sqm with private bathroom (9 sqm) * Bedroom 2 - 21 sqm | * Bedroom 3 - 16 sqm * Secondary bathroom - 4 sqm * Bathroom - 2.25 sqm * Two terraces - 13 sqm and 8 sqm On the 6th floor (secluded floor) we have: * Multifunctional room - 30 sqm (ideal for relaxation, hobby, fitness) * Bedroom/office - 15 sqm and Bathroom - 7 sqm * Two spectacular terraces - 36 sqm and 28 sqm, perfect for spending time outdoors The finishes are of good quality, the spaces are generous with large glazing. Separately, the 2 dependent parking spaces in the underground garage can be purchased separately at the price of 50,000 euros.

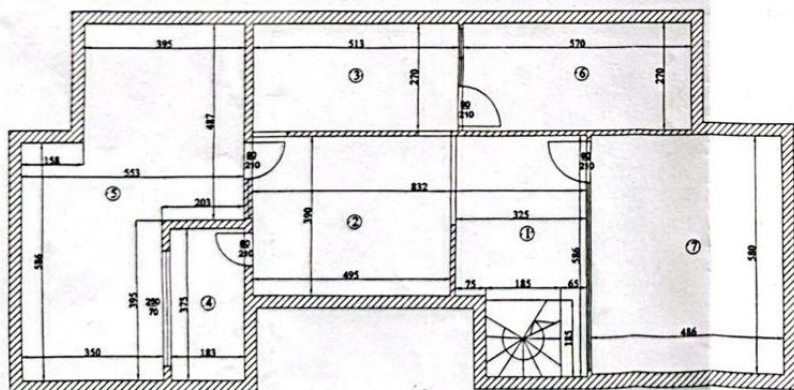
<https://www.goldenkey.ro/en/property-duplex-penthouse-with-6-rooms-4-baths-312mpc-cp2902834>



Apartment Etaj 5

Nr. incapere	Denumire incapere	Suprafata utila (mp)
1	Dormitor	16.20
2	Dormitor	20.55
3	Bucatarie	16.52
4	Camera de zi	40.01
5	Acces Terasa	4.53
6	Vestibul	8.72
7	Grup sanitar	2.25
8	Baie	4.36
9	Baie	8.90
10	Dormitor	22.64
11	Sas	8.64
Suprafata Utila = 153.32 mp		
12	Balcon	13.16
13	Balcon	7.97
Suprafata Totala = 174.45 mp		

Terasa inchisa



Terasa inchisa

Nr. incapere	Denumire incapere	Suprafata utila (mp)
1	Hol	14.15
2	Camera	19.41
3	Camera	13.95
4	Baie	6.86
Suprafata Utila = 54.37 mp		
5	Terasa	36.08
6	Terasa	15.39
7	Terasa	28.19
8	Scara	3.42
Suprafata Totala = 137.45 mp		

Executant,		
Numele si prenumele executantului:		De
Semnatura si stampila		OCTOMBRIE