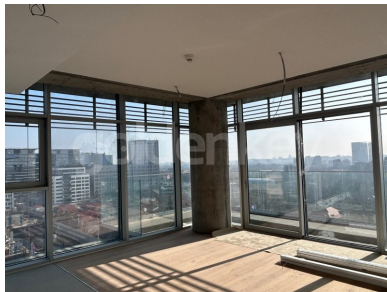


FLOREASCA - Floreasca Lake View
3 bedrooms, 2 baths

379,000 €



GENERAL INFORMATION

- 3 rooms
- level: 5 / 1S+P+25E
- construction year: 2024

AREAS

- built: 96 sqm
- usable: 69 sqm

CONTAINS

- 2 bedrooms
- 2 bathrooms

Utilities

air conditioning, shower, bathtub, unfurnished, central heating, underfloor heating, water meters, heating meter, electricity meter, elevator

Property details

Located vsv Promenada Mall, at the crossroads of Bucharest's first-class social, commercial, business and residential hubs, the two glass-fronted luxury towers spanning 12 and 25 floors are built to satisfy those with refined tastes. This 2 bedrooms apartment is located in the big tower, T1- 25 floors, on the 5th floor and enjoys panoramic views of the city and the lake. It is sunny all day thanks to the large glazed areas and the orientation to the southeast. The total built area is 96sqm of which 70sqm usable plus 18sqm terrace. It consists of a spacious living room with 2 glass walls and kitchen, a terrace of 18sqm, a master bedroom with its own bathroom with a double sink and a bathtub, a secondary bedroom and a bathroom 2 with shower. The resort's private pool turns the end of the busy day into a relaxing and well-deserved treat. The gym and SPA will make your life easier, so you won't have to worry about being late for work in the morning or not being able to get to the gym in the evening. The building also has dry cleaning, laundry, café and concierge services. A few steps from the business area but in the middle of nature, 500m from the Aurel Vlaicu metro, panoramic views, luxurious lobby, the 5-star facilities of the project, are the main advantages of this Atenor development. The parking space in the underground garage costs 25,000 euros + VAT and 6000 euros + VAT box

<https://www.goldenkey.ro/en/property-floreasca-lake-view-3-bedrooms-2-baths-south-east-cp2588948>

Apartment Type 3c

Floors: 3, 5, 7, 9



Total Area

68,45 sq m

Balcony

17,6 sq m

No. of rooms: 3

No. of bathrooms: 2

Floor: 5/25

Apt. built area: 78,46 sq m

Total built area: 96,06 sq m

