

IANCU NICOLAE - Impressive villa near the forest, indoor pool, sauna, fitness gym
ID:781470

10,000 € / lună
1,800,000 €



GENERAL INFORMATION

- 7 rooms
- level: P+2E
- construction year: 2008

AREAS

- built: 860 sqm
- usable: 600 sqm

CONTAINS

- 5 bedrooms
- 5 bathrooms

Utilities

air conditioning, stove, shower, bathtub, dressing room, fridge, kitchen hood, jacuzzi, washing machine, dishwasher, staircase, fireplace, alarm system, partially furnished, unfurnished, radiators, central heating, furnished kitchen, equipped kitchen, water meters, electricity meter, gas meter, private garden, irrigation, sauna

Property details

Placed in Pipera-Iancu Nicolae area, near the forest, this gorgeous 5 bedrooms villa is disposed on 3 levels Gf+2 and has been built on a 1500sqm landplot. It has a usable surface of 600sqm and 1100sqm garden. The ground floor consists of spacious living room (67sqm and 7m ceiling) with exit on the terrace and in the garden, indoor pool, separate equipped kitchen, office/bedroom, bathroom, fitness gym with bathroom, sauna, technical room and garage for 2 cars. 1st floor consists of master bedroom with dressing room, private bathroom and exit on the terrace and 2 bedrooms that share 1 bathroom. On the 2nd floor there are 2 bedrooms that share 1 bathroom. The villa has good quality finishes, ample glazed spaces, mature arranged garden, being the ideal property for residence.

<https://www.goldenkey.ro/en/property-impressive-villa-near-the-forest-indoor-pool-sauna-fitness-gym-cp781470>

GoldenKey Premium Real Estate | Bringing you home... since 2006

73 Aron Cotrus St., Bucharest 1 | Phone: +4 021 795 00 95 | Email: office@goldenkey.ro
www.goldenkey.ro | www.herastraupark.ro | www.gdk.properties

NR. INCAPERE	DENUMIRE INCAPERE	SUPRAFATA UTILA (mp)
3.	Hol	11.68
4.	Camera	18.27
5.	Sauna	2.25
6.	Baie	2.74
7.	Camera	12.54
8.	Baie	4.00
9.	Birou	16.49
10.	Bucatarie	23.33
13.	Hol	37.05

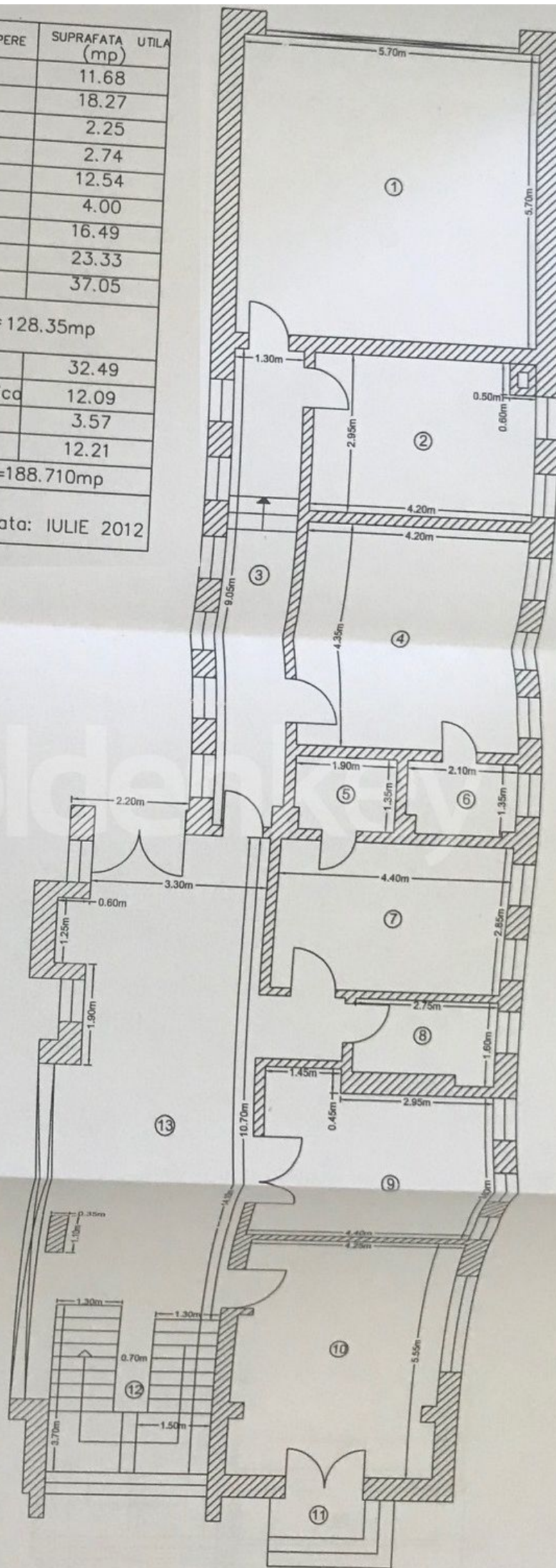
Suprafata utila = 128.35mp

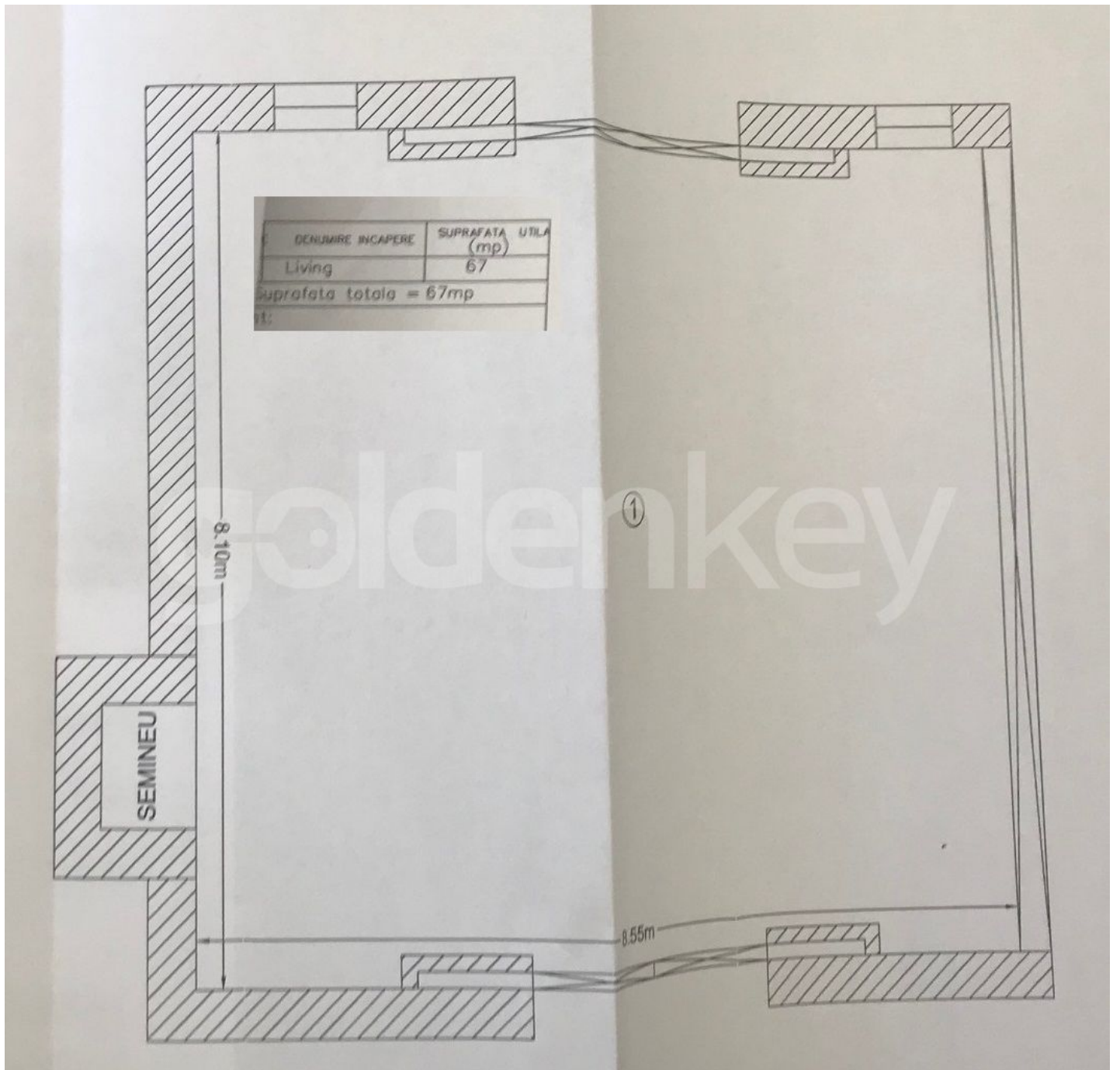
1.	Garaj	32.49
2.	Camera tehnica	12.09
11.	Terasa	3.57
12.	Casa scarii	12.21
Suprafata totala = 188.710mp		

Executant:

ing. Padurariu Radu Ion

Data: IULIE 2012



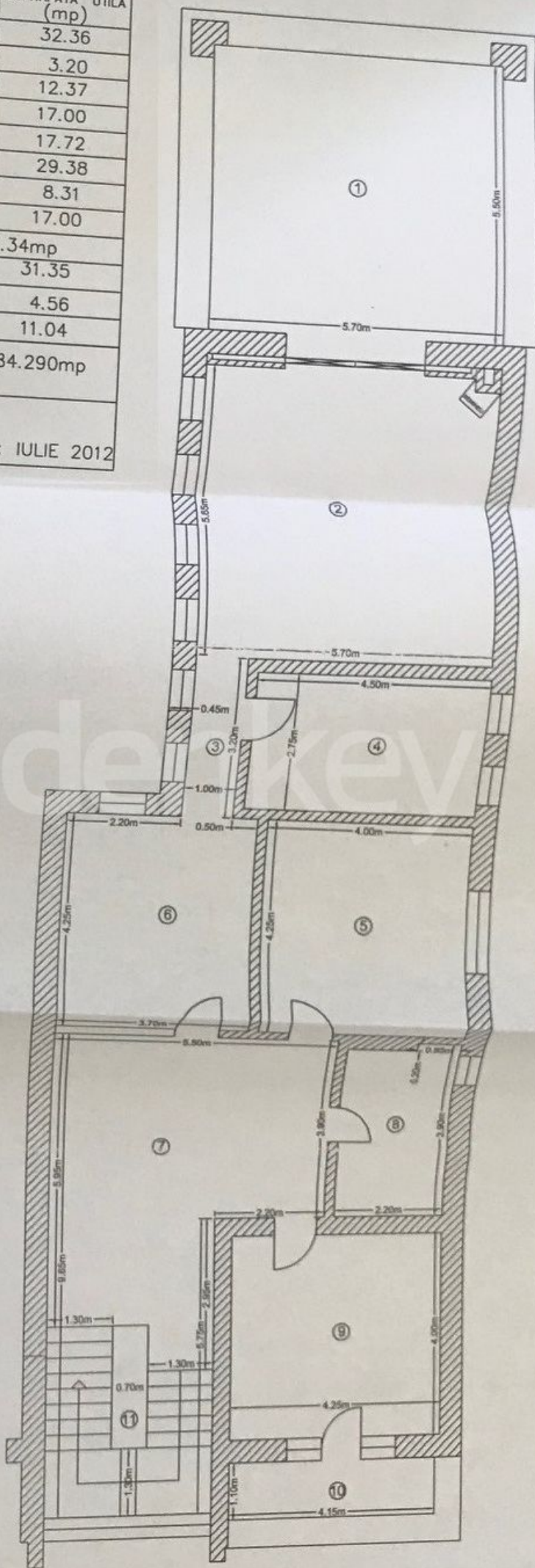


NR. INCAPERE	DENUMIRE INCAPERE	SUPRAFATA UTILA (mp)
2.	Camera	32.36
3.	Hol	3.20
4.	Baie	12.37
5.	Camera	17.00
6.	Dressing	17.72
7.	Hol	29.38
8.	Baie	8.31
9.	Camera	17.00
Suprafata utila = 137.34mp		
1.	Balcon	31.35
10.	Balcon	4.56
11.	Casa scarii	11.04
Suprafata totala = 184.290mp		

Executant:

ing. Padurarju Radu Ion

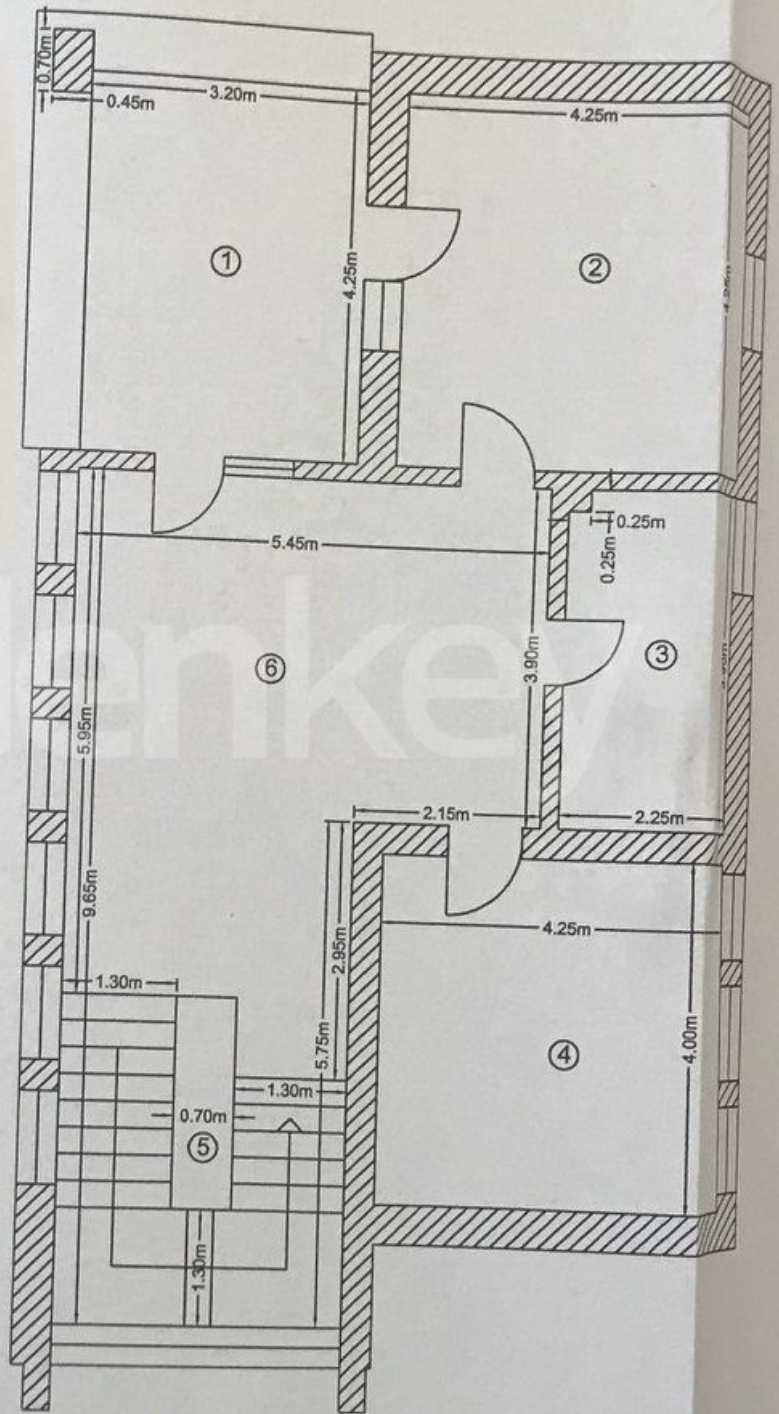
Data: IULIE 2012



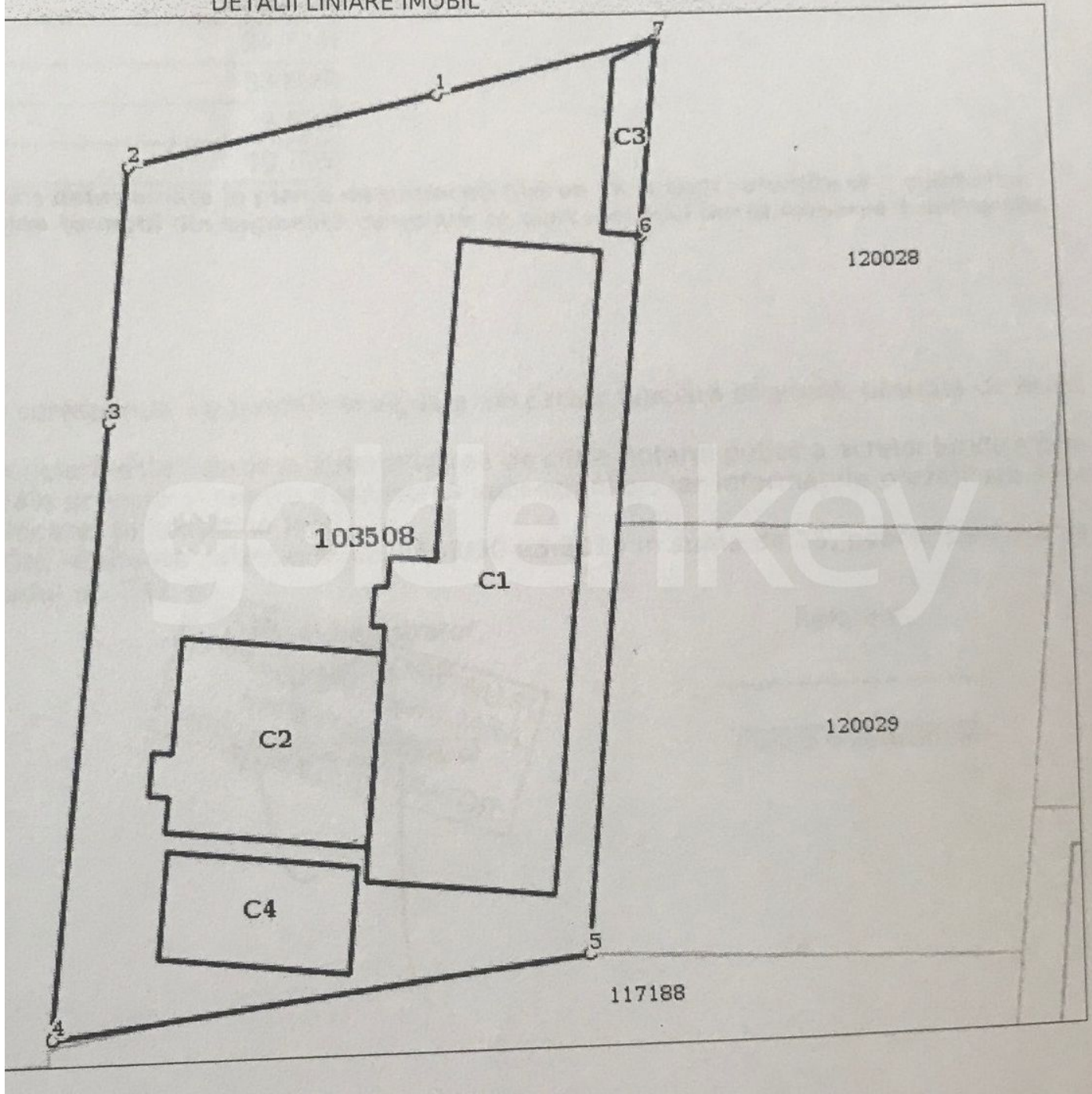
Publicitate Imobiliară ILFOV

INELIA

DENUMIRE INCAPERE	SUPRAFATA UTILA (mp)
Dormitor	18.06
Baie	8.71
Dormitor	17.00
Hol	29.19
rafata utila = 72.96mp	
Balcon	13.60
Casa Scarii	11.04
rafata totala = 97.60mp	



DETALII LINIARE IMOBIL



GoldenKey Premium Real Estate | Bringing you home... since 2006

73 Aron Cotrus St., Bucharest 1 | Phone: +4 021 795 00 95 | Email: office@goldenkey.ro
www.goldenkey.ro | www.herastrapark.ro | www.gdk.properties