

KISELEFF - Kiseleff Park

2 bedrooms apartment in residential compound, garage

2,500 € / lună



GENERAL INFORMATION

- 3 rooms
- level: 1 / 1S+P+5E
- construction year: 2010

AREAS

- built: 150 sqm
- usable: 125 sqm

CONTAINS

- 2 bedrooms
- 2 bathrooms

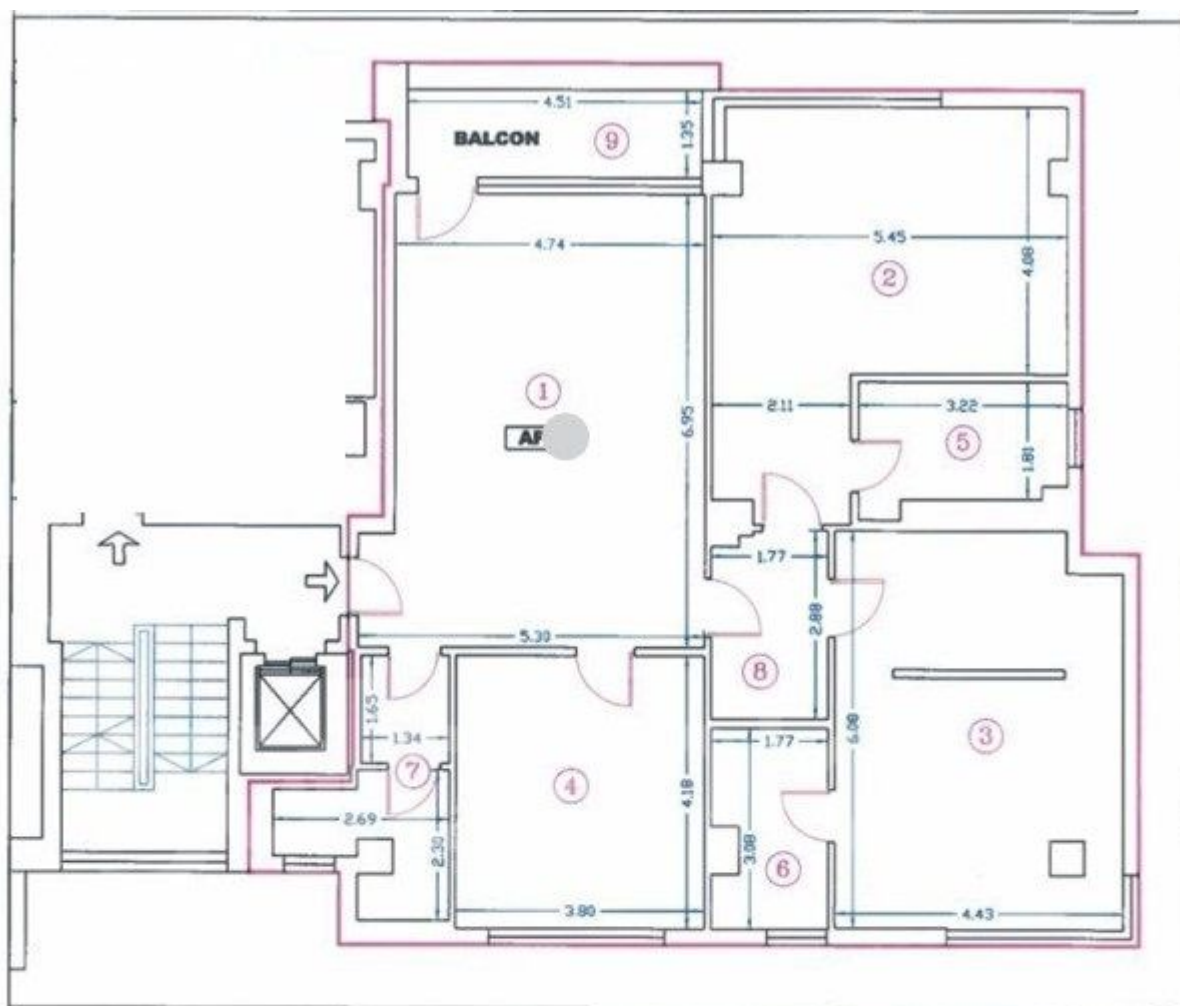
Utilities

air conditioning, stove, shower, bathtub, dressing room, fridge, kitchen hood, washing machine, dishwasher, fully furnished, central heating, underfloor heating, closed kitchen, furnished kitchen, equipped kitchen, water meters, heating meter, electricity meter, shared yard, private garden, elevator

Property details

Located in one of the most beautiful residential compound in the North area, this apartment is on the 1st floor of a building on 4 levels and it benefits from the proximity of the facilities of the Kiseleff area as well as privacy and security 24/7. It has a usable area of 125sqm and has 1 underground parking place. It consists of the living area with large glazed surfaces and access to the terrace, fully equipped modern kitchen, guest toilet and storage room, master bedroom with bathroom and a second bedroom with bathroom and dressing room. It has the advantage of being within a short distance of the facilities of the area (market, restaurants, parks, private clinics), Aviatorilor Metro Station, Charles de Gaulle Square and 10 minutes drive from the city center.

<https://www.goldenkey.ro/en/property-kiseleff-park-2-bedrooms-apartment-in-residential-compou-d-garage-cp2549883>



Nr. Incapere	Denumire Incapere	Suprafata utila [mp]
1	Comera de zi	33.92
2	Dormitor	26.34
3	Dormitor	25.80
4	Bucatarie	15.86
5	Baie	5.94
6	Baie	5.13
7	Baie	6.47
8	Sos	4.97
Suprafata Utila		124.43
9	Balcon	6.09
Suprafata Totala		130.52

350382/02.09.2010

Executant,	Data,
Ing. Ioan FOLFA	August, 2010
Receptionat,	Data,