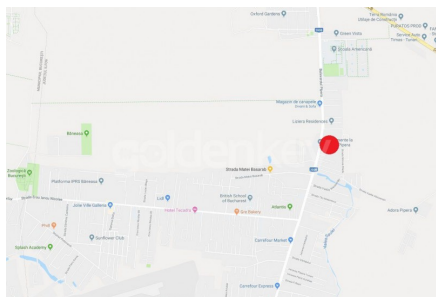


PIPERA - Land plot of 3000sqm on Pipera Blvd. - Iancu Nicolae
ID:672917

1,050,000 €



GENERAL INFORMATION

- 2.2 cut
- 40 % POT

AREAS

- land: 3000 sqm

CONTAINS

- opening: 129 m

Utilities

Property details

Located on Pipera-Tunari Street, vsv Baneasa Forest, close to the intersection with Iancu Nicolae and American School, this land plot has an area of 3000sqm with 30 meters opening to the main street and 100 meters to servitude road. Urbanistic coefficients are CUT 2.2, POT 40%, can be build approx. 6600mp above ground without terraces and underground. It is suitable for residential development.

<https://www.goldenkey.ro/en/property-land-plot-of-3000sqm-on-pipera-blvd-iancu-nicolae-cp672917>

