

AVIATIEI - Office space near Metro Aurel Vlaicu  
200sqm

**1,880 € / lună**  
**500,000 €**



#### **GENERAL INFORMATION**

- 6 rooms
- level: floor 4 / 1S+P+5E
- construction year: 2004

#### **AREAS**

- built: 200 sqm
- usable: 160 sqm

#### **CONTAINS**

- bedrooms
- 2 bathrooms

#### **Utilities**

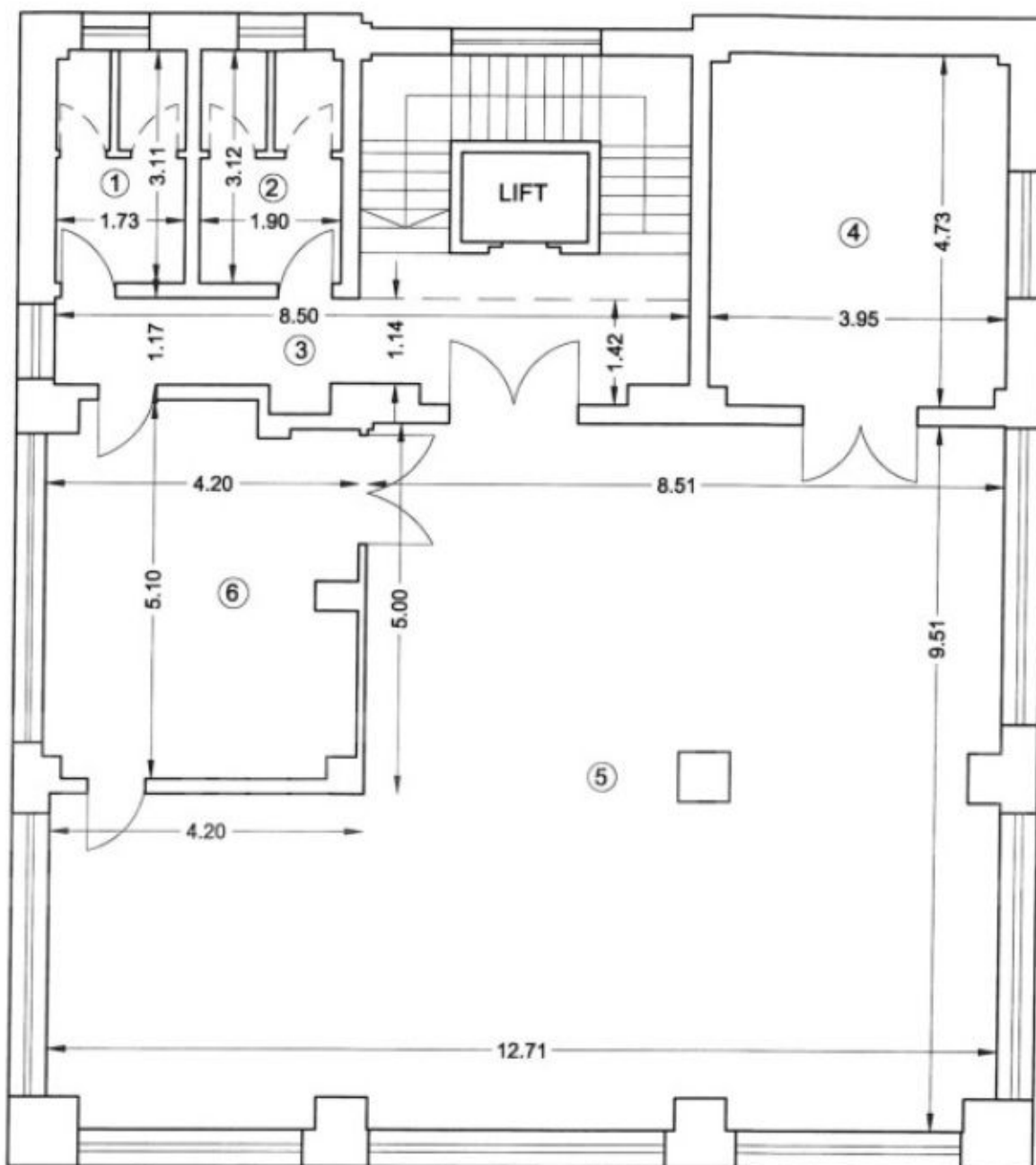
wheelchair access, separate metering, exterior cleaning, elevator maintenance and repairs

#### **Property details**

This office space is located in the business area of the city, a few minutes from the Aurel Vlaicu metro and Herastrau Park. It is located on the 4th floor of an office building S+GF+5. The total area is 200sqm of which 160sqm usable. It is suitable for showrooms, doctors' offices or offices. It is divided into 3 rooms but can be adapted to the tenant's requirements. Easy access to means of transport and proximity to most points of interest are just a few advantages of this space, which offers a working environment at modern standards. An outdoor parking space is available at the price of 25,000 euros + VAT.

<https://www.goldenkey.ro/en/property-office-space-near-metro-aurel-vlaicu-200sqm-cp3010622>

**RELEVU BIROURI**  
scara 1 : 100



| Nr. incapere  | Denumire incapere | Suprafata incapere (m <sup>2</sup> ) |
|---|-------------------|--------------------------------------|
| 1   | Grup sanitar      | 5.15                                 |
| 2   | Grup sanitar      | 5.70                                 |
| 3   | Hol               | 10.88                                |
| 4   | Birou             | 18.53                                |
| 5   | Birou             | 98.51                                |
| 6   | Sala de sedinte   | 20.24                                |
| <b>Suprafata utila = 159.01 m<sup>2</sup></b>           |                   |                                      |
| <b>Suprafata totala = 159.01 m<sup>2</sup></b>          |                   |                                      |
| <b>Cota parte indiviza din partile comune = 20.73 %</b> |                   |                                      |
| <b>Cota parte teren = 112.38 m<sup>2</sup></b>          |                   |                                      |

|   |                 |
|---|-----------------|
| <b>Executant,</b><br>ION ALEXANDRU - PAUL | <b>C</b><br>aug |
|   |                 |
| <b>Receptionat,</b>                       | <b>D</b>        |

**GoldenKey Premium Real Estate** | Bringing you home... since 2006

73 Aron Cotrus St., Bucharest 1 | Phone: +4 021 795 00 95 | Email: office@goldenkey.ro  
www.goldenkey.ro | www.herastrapark.ro | www.gdk.properties