

FLOREASCA - Premium 1 bedroom apartment
One Mircea Eliade

1,500 € / lună



GENERAL INFORMATION

- 2 rooms
- level: 6 / 3S+P+20E
- construction year: 2021

AREAS

- built: 70 sqm
- usable: 48 sqm

CONTAINS

- 1 bedrooms
- 1 bathrooms

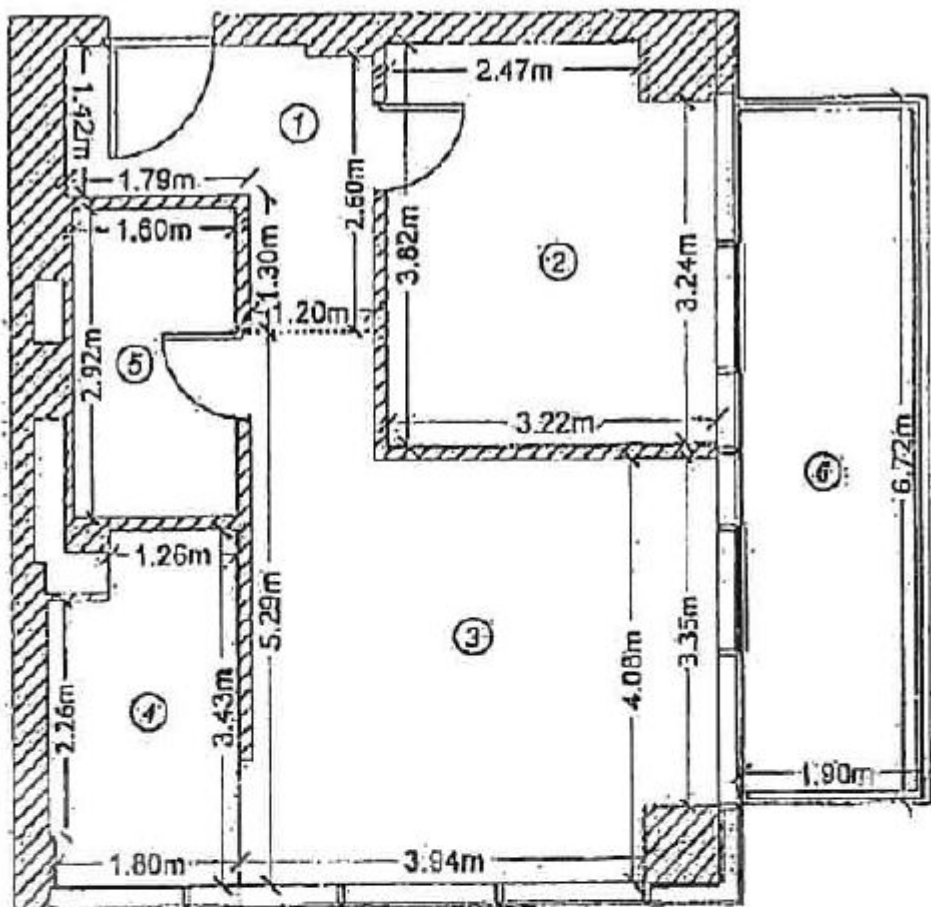
Utilities

air conditioning, stove, shower, fridge, kitchen hood, washing machine, fully furnished, luxury furnished, radiators, central heating, underfloor heating, open kitchen, furnished kitchen, equipped kitchen, water meters, electricity meter, gas meter, elevator, service closet

Property details

Located in an exclusive residential compound developed between Primaverii and Floreasca areas, one of the greenest areas of the city, this 1 bedroom apartment is on the 6th floor of a 3S+P+20 building. It has a built area of 70sqm of which usable 48sqm and 13sqm terrace. It consists of living room with exit on the terrace, open and fully equipped kitchen, bedroom and bathroom with shower. The finishes and the furniture are of high quality, it has underground heating and 1 underground parking place.(35.000Euro+VAT) The compound has permanent security and video surveillance. Due to the facilities offered and the premium location, this apartment is suitable for the residence of a couple or a person.

<https://www.goldenkey.ro/en/property-premium-1-bedroom-apartment-one-mircea-eliade-lake-an-park-view-cp1254418>



Nr. crt.	Denumire Incapere	Suprafata [mp]
1	Hol-acces	5.91
2	Dormitor	12.00
3	Living	19.58
4	Bucatarie	5.95
5	Baie	4.68
TOTAL SUPRAFATA UTILA =		48.12 mp
6	Balcon	12.77
SUPRAFATA TOTALA =		60.89 mp
SUPRAFATA CONSTRUITA =		60.70 mp

executie lucrari de

Oficiul c