

IANCU NICOLAE - Splendid futuristic villa with modern finishing and furniture
ID:276875

5,500 € / lună
1,550,000 €



GENERAL INFORMATION

- 6 rooms
- level: P+2E
- construction year: 2010

AREAS

- built: 414 sqm
- usable: 340 sqm

CONTAINS

- 4 bedrooms
- 4 bathrooms

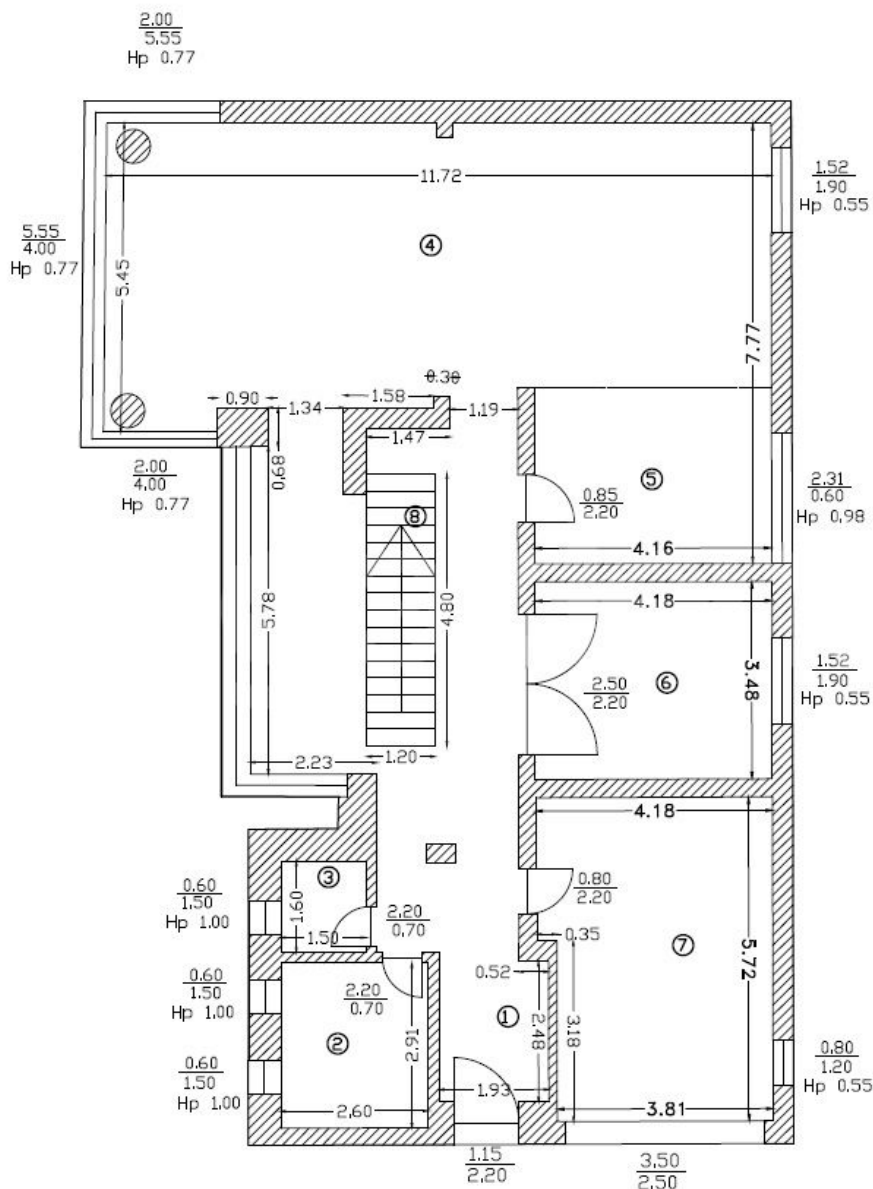
Utilities

air conditioning, stove, shower, bathtub, dressing room, fridge, kitchen hood, washing machine, dishwasher, staircase, tv, luxury furnished, partially furnished, radiators, central heating, open kitchen, furnished kitchen, water meters, heating meter, electricity meter, gas meter, private garden, service closet

Property details

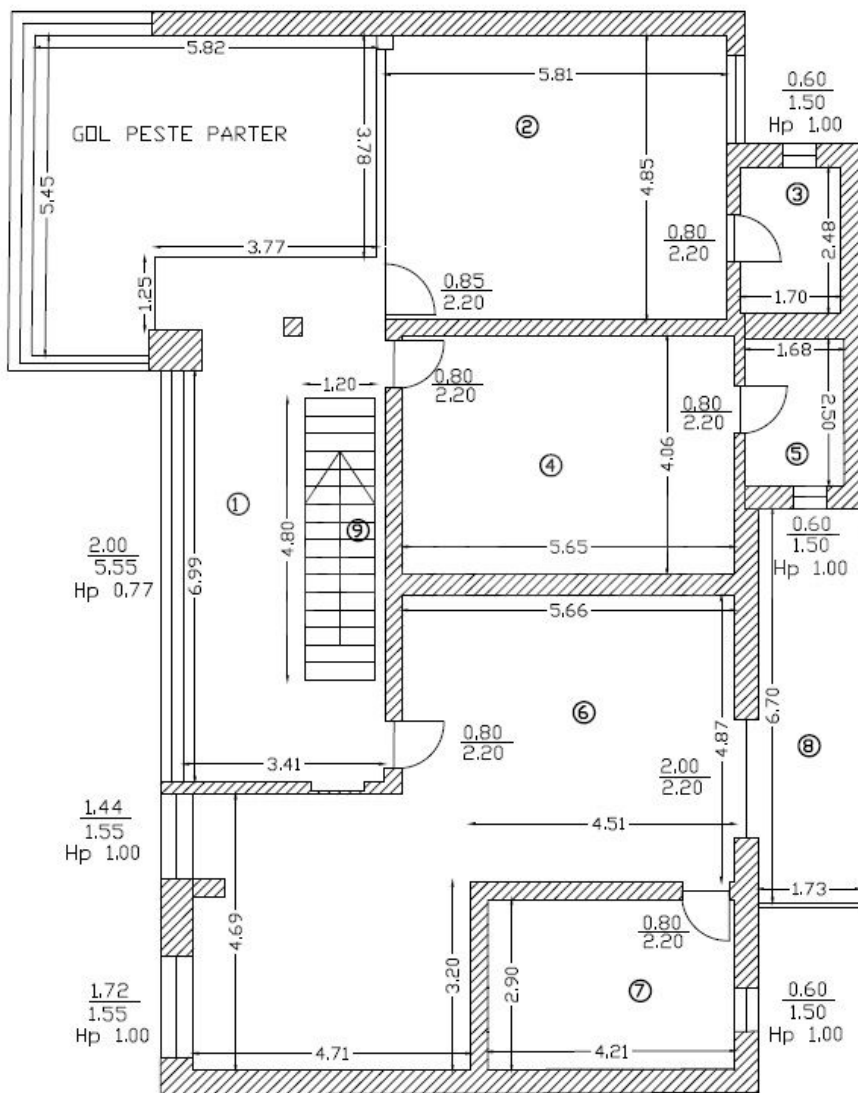
A few minutes of Jolie Ville, this property disposed on 3 levels stands by the accuracy of the futuristic architecture and modern finishes, featuring a bright and generous space living. The Villa was built on a plot of 500 sqm and has a built area of 623 sqm. The ground floor consists of living room with dining area and open kitchen (70sqm), office, guest toilet and garage. On the first floor there are three bedrooms, of which the master bedroom with bathroom and dressing room (60sqm) and 2 secondary bedrooms with en-suite bathrooms. On the second floor is an open space with guest toilet and large terrace (153sqm). In the courtyard can be parked up to 2 cars.

<https://www.goldenkey.ro/en/property-splendid-futuristic-villa-with-modern-finishing-and-furniture-cp276875>



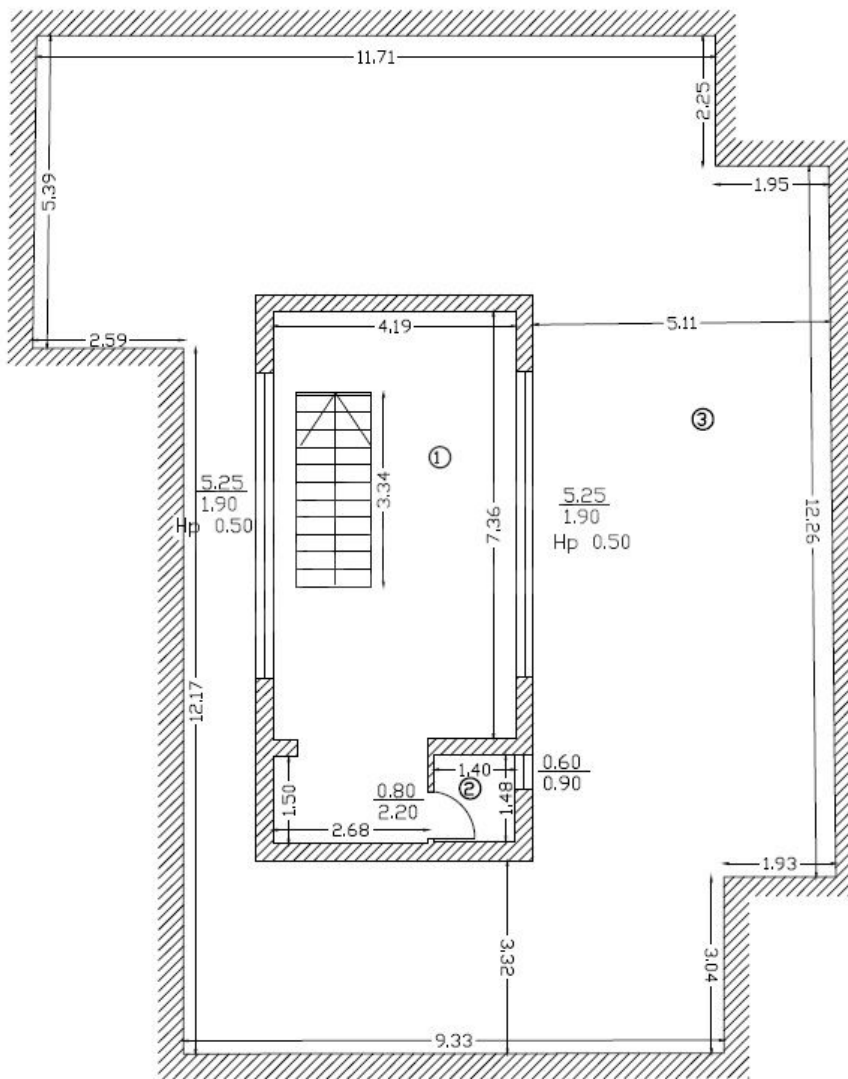
Suprafata Construita Parter = 196 mp

Nr. incapere	Denumire incapere	Suprafata utila (mp)
1	Hol	36.85
2	Camera tehnica	7.58
3	Grup sanitar	2.40
4	Living	57.20
5	Bucatarie	13.00
6	Camera	14.56
7	Garaj	22.66
Suprafata Utila = 154.25 mp		
8	Trepte	5.76
Suprafata Totala = 160.01 mp		
Executant,		Data



Suprafata Construita Etaj = 201 mp

Nr. incapere	Denumire incapere	Suprafata utila (mp)
1	Hol	25.77
2	Dormitor	28.14
3	Baie	4.22
4	Dormitor	22.94
5	Baie	4.20
6	Dormitor	47.82
7	Baie	12.20
Suprafata Utila =		145.29 mp
8	Balcon	11.59
9	Trepte	5.76
Suprafata Totala =		162.64 mp
Executant,		Data
SC GEO CART SRL		08.2019
Receptionat,		Data



Suprafata Construita Terasa = 226 mp

Nr. Incapere	Denumire Incapere	Suprafata utila (mp)
1	Camera	31.32
2	Grup sanitar	2.07
Suprafata Utila = 33.39 mp		
3	Terasa circulabila	153.23
Suprafata Totala = 186.62 mp		
Executant,		Data
SC GEO CART SRL		08.2019
Receptionat,		Data