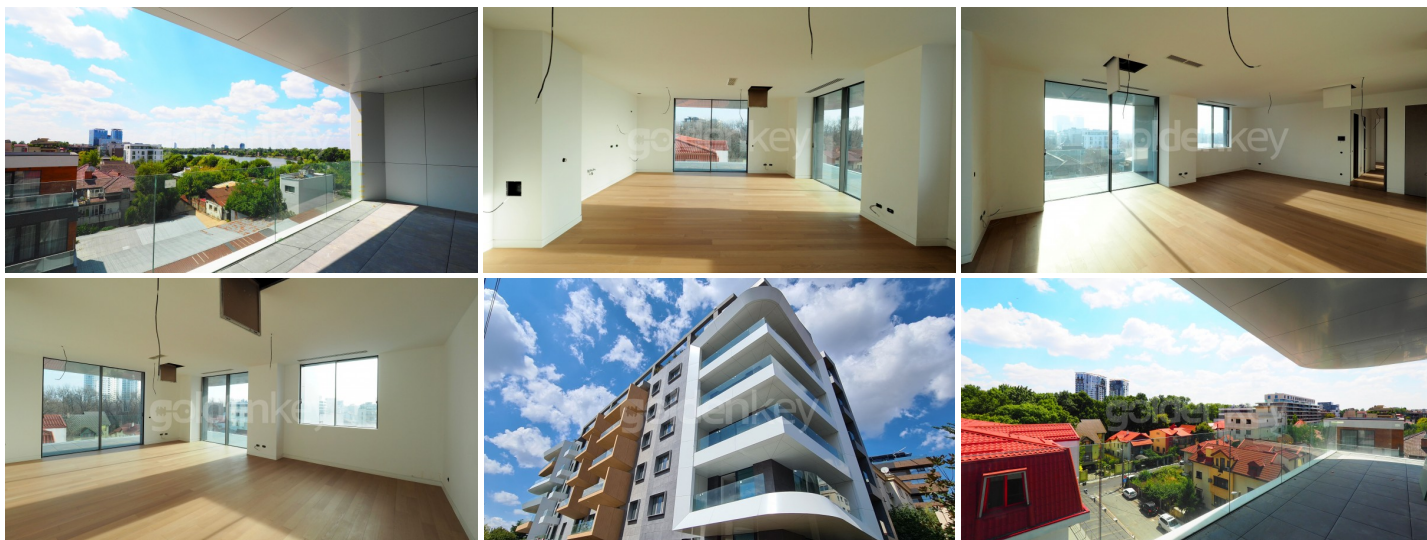


FLOREASCA - Verdi Park
4 Rooms

1,222,000 €



GENERAL INFORMATION

- 4 rooms
- level: 4 / 2S+P+5E
- construction year: 2023

AREAS

- built: 216 sqm
- usable: 127 sqm

CONTAINS

- 3 bedrooms
- 3 bathrooms

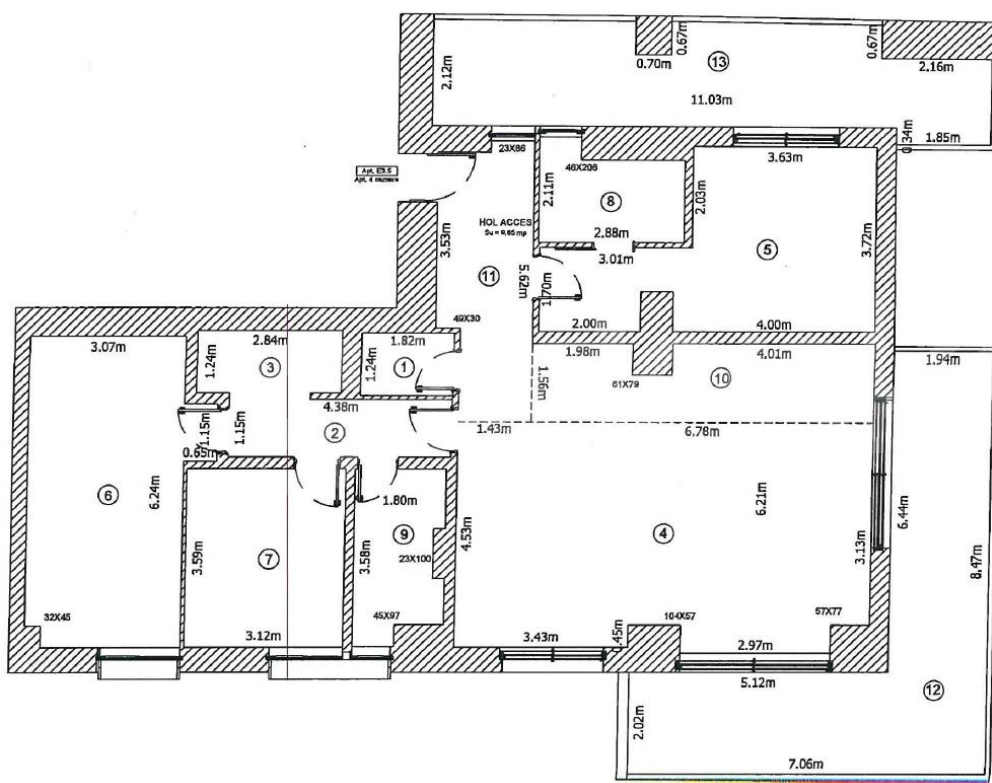
Utilities

air conditioning, shower, bathtub, central heating, underfloor heating, water meters, heating meter, electricity meter, gas meter, underground storage, elevator, service closet

Property details

On the shores of Lake Floreasca, enjoying spectacular views, this 2Ug+GF+5 levels building comprises 35 high-end residential units with 2 and 6 rooms divided on two entrances. The apartments have large glazed surfaces, lake views, generous surfaces and are sunny due to the south-east orientation. Located on the 4th floor, with spectacular views to lake and parc, this apartment has a built area of 216sqm of which 127sqm usable and 50sqm terrace. It consists of a generous living room with dining area, open kitchen with exit on the terrace, toilet, master bedroom with private bathroom and dressing room, and 2 secondary bedrooms with bathroom. The finishing and materials used are top (aluminum joinery, ventilated façade, underfloor heating) from industry leading manufacturers. The unique location on the lakeside, the exceptional quality of the construction and proximity of the Floreasca office pole-Promenade Mall-Aurel Vlaicu, modern facilities, make the residential experience at the highest level.

<https://www.goldenkey.ro/en/property-verdi-park-4-rooms-floreasca-lake-view-219sqm-cp813213>



Nr. incapere	Denumire incapere	Suprafata utila (mp)
1	Gr. sanitar	2.3
2	Hol	5.0
3	Dressing	3.5
4	LIVING + DINNING	38.8
5	Dormitor 1	18.1
6	Dormitor 2	19.8
7	Dormitor 3	11.2
8	Baie 1	5.1
9	Baie 2	5.8
10	Bucatarie	10.0
11	Hol acces	9.6
Suprafata Utila = 127.2 mp		
12	Terasa	26.8
13	Terasa	21.9
Suprafata Totala = 175.9 mp		
Suprafata construita = 157 mp		
Executanti		Data
Aut.Sena KU-MD-F-Ni. v. 100		Ian 2026
Receptionat,		Data

Suprafata construita terasa = 56 mp